

BEAUFORT, SOUTH CAROLINA

RNAV (GPS) RWY 23

WAAS Chan 93379 W23A	APCH CRS 227°	Rwy ldg 12,202 TDZE Arprt Elev 37
--	-------------------------	---

AL-916 [USN]

BEAUFORT MCAS (MERRITT FLD) (KNBC)

RNP APCH - DME/DME RNP-0.3 NA
RADAR Required.
*When ALS inop, increase vis CAT ABCD to 3/4 mile.
**When ALS inop, increase vis CAT ABCD to 7/8 mile.



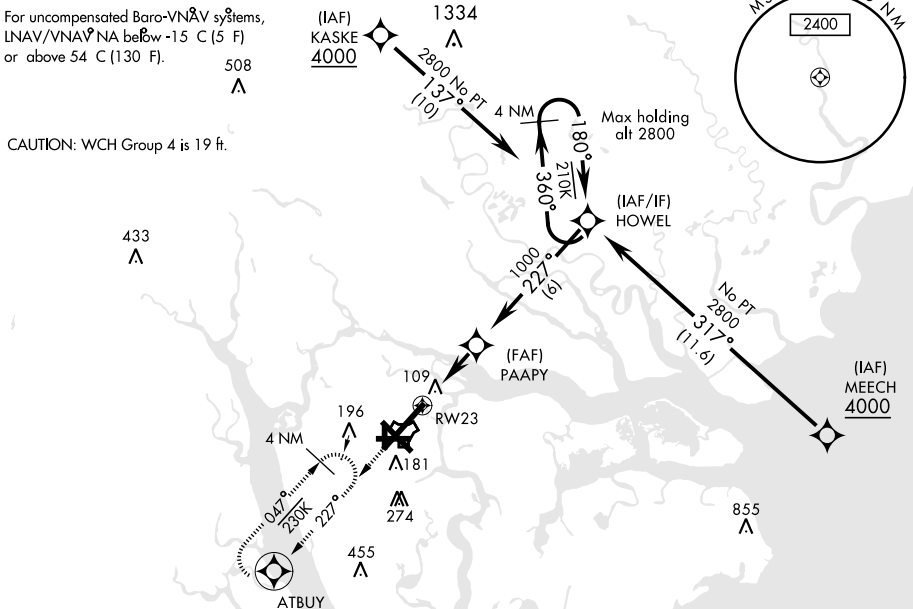
MISSED APPROACH: Climb to 3000 direct ATBUY and hold. Continue climb in hold to 3000.

ATIS * 279.525	BEAUFORT APP CON (ABV 3000) 125.125 292.125 (3000 and BLW) 123.7 269.125	BEAUFORT TOWER * 119.05 342.875	GND CON 128.15 348.625	CLNC DEL 128.15 254.375	ASR/ PAR
--------------------------	--	---	----------------------------------	-----------------------------------	-------------

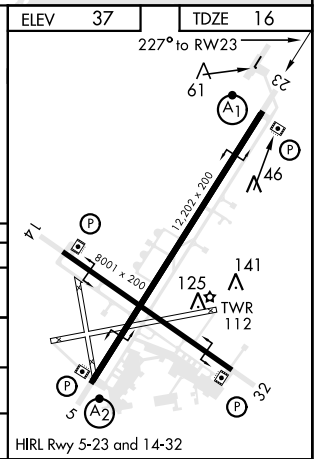
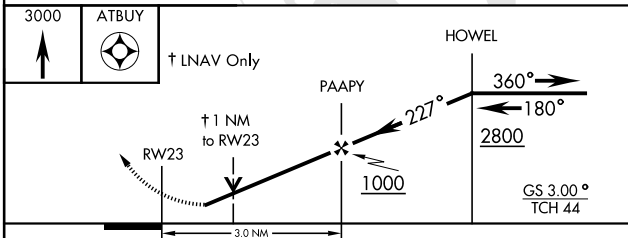
***When ALS inop, increase vis CAT ABCD to 1 mile.

For uncompensated Baro-VNAV systems,
LNAV/VNAV NA below -15 C (5 F)
or above 54 C (130 F).

CAUTION: WCH Group 4 is 19 ft.



EMERG SAFE ALT 100 NM 3100



CATEGORY	A	B	C	D
LPV DA *	216-1/2		200	(200-1/2)
LNAV/ VNAV DA **	266-1/2		250	(300-1/2)
LNAV MDA ***	360-1/2	344 (400-1/2)	360-3/4	344 (400-3/4)
CIRCLING	500-1	463 (500-1)	600-1-1/2 563 (600-1-1/2)	600-2 563 (600-2)

BEAUFORT, SOUTH CAROLINA
Amdt 2 01FEB18

32°29'N-80°43'W

BEAUFORT MCAS (MERRITT FLD) (KNBC)

RNAV (GPS) RWY 23

SE-2, 10 SEP 2020 to 08 OCT 2020

SE-2, 10 SEP 2020 to 08 OCT 2020