

# RNAV (GPS) RWY 5

WAAS Chan <b>90095</b> <b>W05A</b>	APCH CRS <b>047°</b>	Rwy ldg <b>12,202</b> TDZE <b>37</b> Arpt Elev <b>37</b>	AL-916 [USN]	BEAUFORT MCAS (MERRITT FLD) (KNBC)
--	-------------------------	--	--------------	------------------------------------

RNP APCH - DME/DME RNP-0.3 NA	SALSF 	MISSED APPROACH: Climb to 3000 direct DUSBE, track 047° to HOWEL and hold. Continue climb in hold to 3000.
RADAR Required.		
<p>▼ * When ALS inop, increase vis to 7/8 mile.</p>		

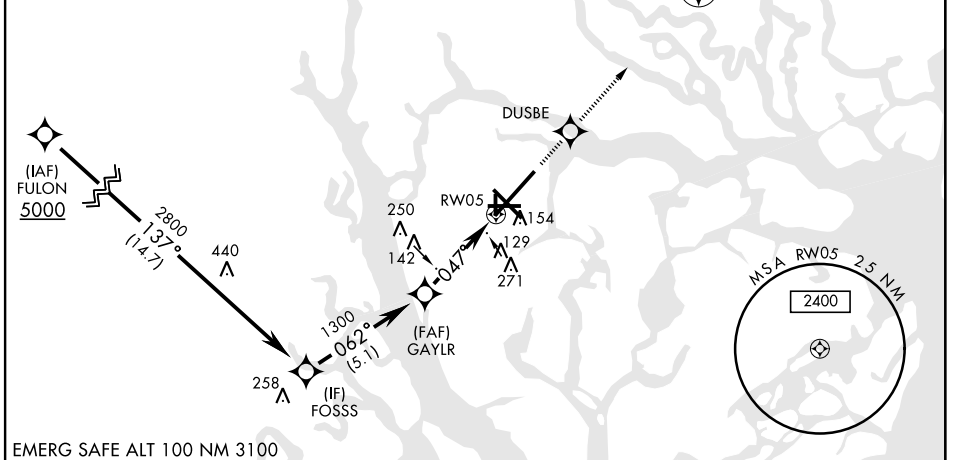
ATIS ★ <b>279.525</b>	BEAUFORT APP CON <b>125.125 292.125</b> ABV 3000 <b>123.7 269.125</b> 3000 and BLW	BEAUFORT TOWER ★ <b>119.05 342.875</b>	GND CON <b>128.15 348.625</b>	CLNC DEL <b>128.15 254.375</b>	ASR/ PAR
--------------------------	--	---	----------------------------------	-----------------------------------	-------------

\*\* When ALS inop, increase CAT AB vis to 1 mile, CAT CD to 1 1/8 miles.

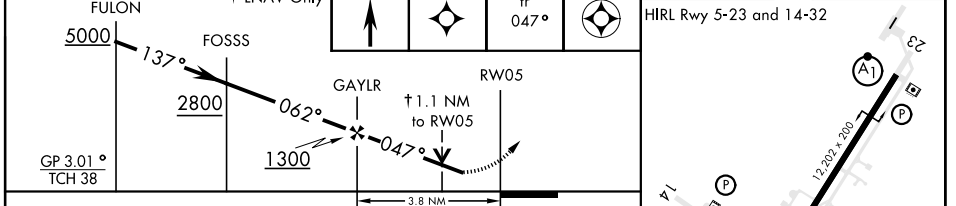
Initial approach segment 230 KIAS Max.  
Intmed approach segment 210 KIAS Max.

For uncompensated Baro-VNAV systems, LNAV/VNAV NA below -15°C (5°F) or above 54°C (130°F).

CAUTION: Group 3 WCH is 18 ft; Group 4 is 13 ft.



EMERG SAFE ALT 100 NM 3100



CATEGORY	A	B	C	D
LPV DA		237-3/4	200 (200-3/4)	
LNAV/ * VNAV DA	296-3/4 259 (300-3/4)	307-3/4 270 (300-3/4)	315-3/4 278 (300-3/4)	326-3/4 289 (300-3/4)
LNAV MDA **	440-3/4	403 (500-3/4)	440-1	403 (500-1)
CIRCLING	500-1	463 (500-1)	600-1 1/2 563 (600-1 1/2)	600-2 563 (600-2)

# RNAV (GPS) RWY 5

SE-2, 10 SEP 2020 to 08 OCT 2020

SE-2, 10 SEP 2020 to 08 OCT 2020