

TACAN RWY 14

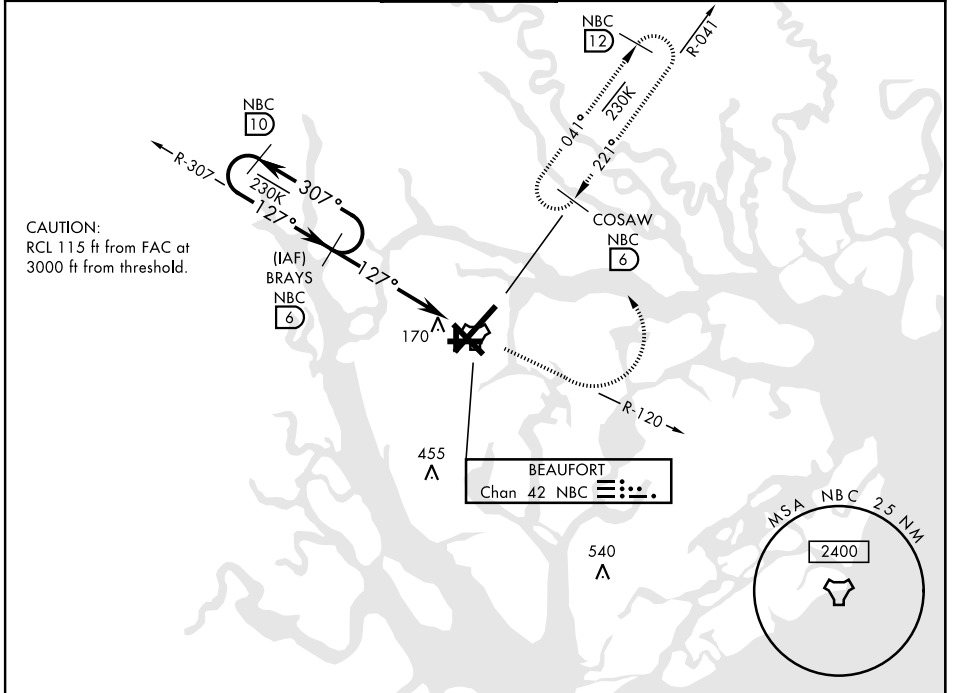
TACAN NBC Chan 42	APCH CRS 127°	Rwy ldg TDZE Arprt Elev 8001 33 37	AL-916 [USN]	BEAUFORT MCAS (MERRITT FLD) (KNBC)
-----------------------------	-------------------------	---	--------------	------------------------------------

RADAR required.

▼

MISSED APPROACH: Climb to 1600 on NBC TACAN R-120, then climbing left turn to 3000 via hdg 330° to intercept NBC R-041 to 6 DME (COSAW) and hold. Continue climb in hold to 3000.

ATIS ★ 279.525	BEAUFORT APP CON (ABV 3000) 125.125 292.125 (3000 and BLW) 123.7 269.125	BEAUFORT TOWER ★ 119.05 342.875	GND CON 128.15 348.625	CLNC DEL 128.15 254.375	ASR/PAR
--------------------------	--	---	----------------------------------	-----------------------------------	---------



SE-2, 10 SEP 2020 to 08 OCT 2020

SE-2, 10 SEP 2020 to 08 OCT 2020

EMERG SAFE ALT 100 NM 3100		ELEV 37	TDZE 33		
<p>BRAYS R-307 (6)</p> <p>1700 ← 307° / 127° → 1700</p> <p>VDA and VGSI not coincident 2.94° TCH 41</p> <p>4.5 NM</p>		<p>1600 ↑ R-120</p> <p>3000 ↙ COSAW R-041 (6)</p> <p>127° to TACAN</p>	<p>HIRL Rwy 5-23 and 14-32</p>		
CATEGORY	A	B	C	D	E
S-14	420-1 387 (400-1)		420-1 1/8 387 (400-1 1/8)		
CIRCLING	500-1 463 (500-1)		600-1 1/2 563 (600-1 1/2)	600-2 563 (600-2)	740-2 1/2 703 (800-2 1/2)

TACAN RWY 14