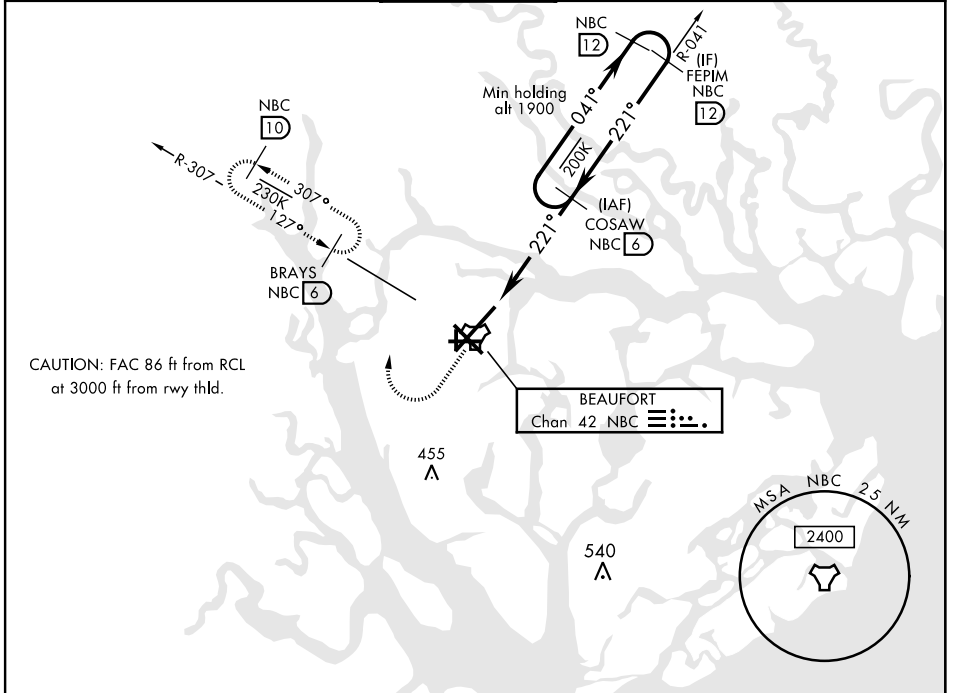


# TACAN RWY 23

TACAN NBC Chan <b>42</b>	APCH CRS <b>221°</b>	Rwy Idg <b>12,202</b> TDZE <b>16</b> Arprt Elev <b>37</b>	AL-916 [USN]	BEAUFORT MCAS (MERRITT FLD) (KNBC)
-----------------------------	-------------------------	---	--------------	------------------------------------

RADAR required.		ALSIF-1 	MISSED APPROACH: Climb to 500, then climbing right turn to 3000, join NBC TACAN R-307 direct BRAYS and hold. Continue climb in hold to 3000.
*When ALS inop, increase vis CAT ABCDE to 1 mile.			

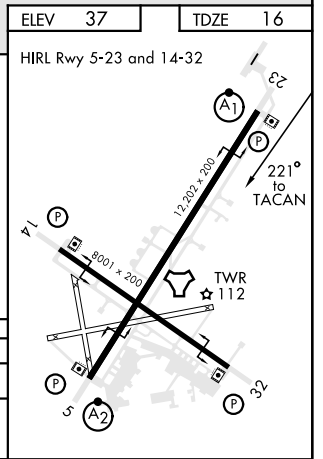
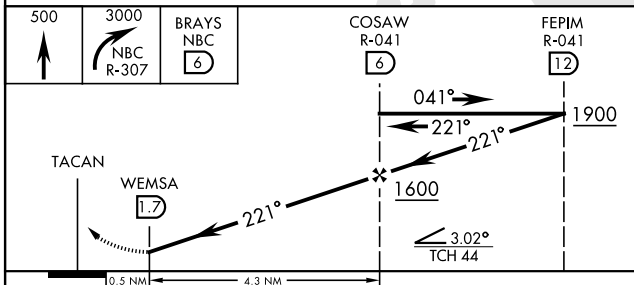
ATIS ★ <b>279.525</b>	BEAUFORT APP CON (ABV 3000) <b>125.125 292.125</b> (3000 and BLW) <b>123.7 269.125</b>	BEAUFORT TOWER ★ <b>119.05 342.875</b>	GND CON <b>128.15 348.625</b>	CLNC DEL <b>128.15 254.375</b>	ASR/PAR
--------------------------	--	---	----------------------------------	-----------------------------------	---------



SE-2, 10 SEP 2020 to 08 OCT 2020

SE-2, 10 SEP 2020 to 08 OCT 2020

EMERG SAFE ALT 100 NM 3100



CATEGORY	A	B	C	D	E
S-23 *	360-1/2	344 (400-1/2)	360-3/4	344 (400-3/4)	
<b>C</b> CIRCLING	500-1	463 (500-1)	600-1 1/2 563 (600-1 1/2)	600-2 563 (600-2)	740-2 1/2 703 (800-2 1/2)

# TACAN RWY 23