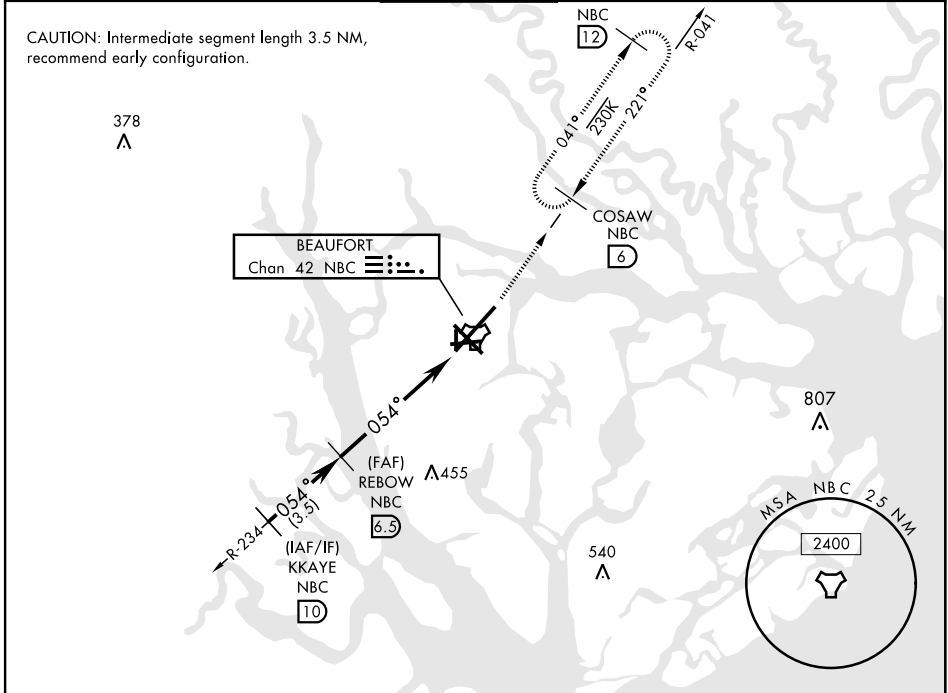


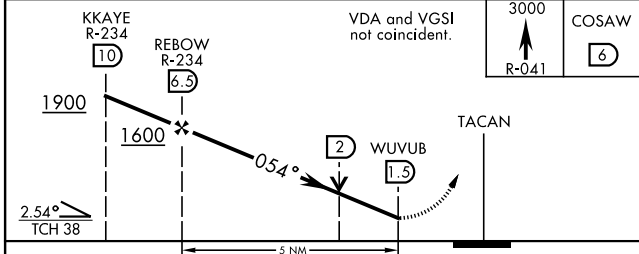
# TACAN RWY 5

TACAN NBC Chan <b>42</b>	APCH CRS <b>054°</b>	Rwy ldg <b>12,202</b> TDZE <b>37</b> Arprt Elev <b>37</b>	AL-916 [USN]	BEAUFORT MCAS (MERRITT FLD) (KNBC)
-----------------------------	-------------------------	---	--------------	------------------------------------

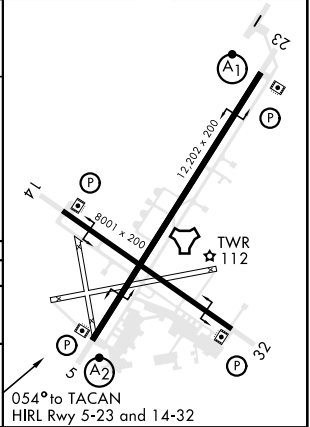
RADAR required.		SALSF 	MISSED APPROACH: Climb to 3000 via NBC R-041 to COSAW and hold. Continue climb in hold to 3000.		
▼ * When ALS inop, increase vis CAT AB to 1 mile, CAT CDE to 1 1/2 miles.					
ATIS ★ <b>279.525</b>	BEAUFORT APP CON (ABV 3000) <b>125.125 292.125</b> (3000 and BLW) <b>123.7 269.125</b>	BEAUFORT TOWER ★ <b>119.05 342.875</b>	GND CON <b>128.15 348.625</b>	CLNC DEL <b>128.15 254.375</b>	ASR/PAR



EMERG SAFE ALT 100 NM 3100	ELEV 37	TDZE 37
----------------------------	---------	---------



CATEGORY	A	B	C	D	E
S-5 *	460-3/4	423 (500-3/4)	460-1	423 (500-1)	
CIRCLING	500-1	463 (500-1)	600-1 1/2 563 (600-1 1/2)	600-2 563 (600-2)	720-2 1/2 683 (700-2 1/2)



# TACAN RWY 5

SE-2, 10 SEP 2020 to 08 OCT 2020

SE-2, 10 SEP 2020 to 08 OCT 2020