

OXNARD, CALIFORNIA

HI-TACAN RWY 21

TACAN NTD Chan 43	APCH CRS 216°	Rwy Idg 11,102 TDZE 13 Arpt Elev 13
-----------------------------	-------------------------	--

JAL-925 [USN]

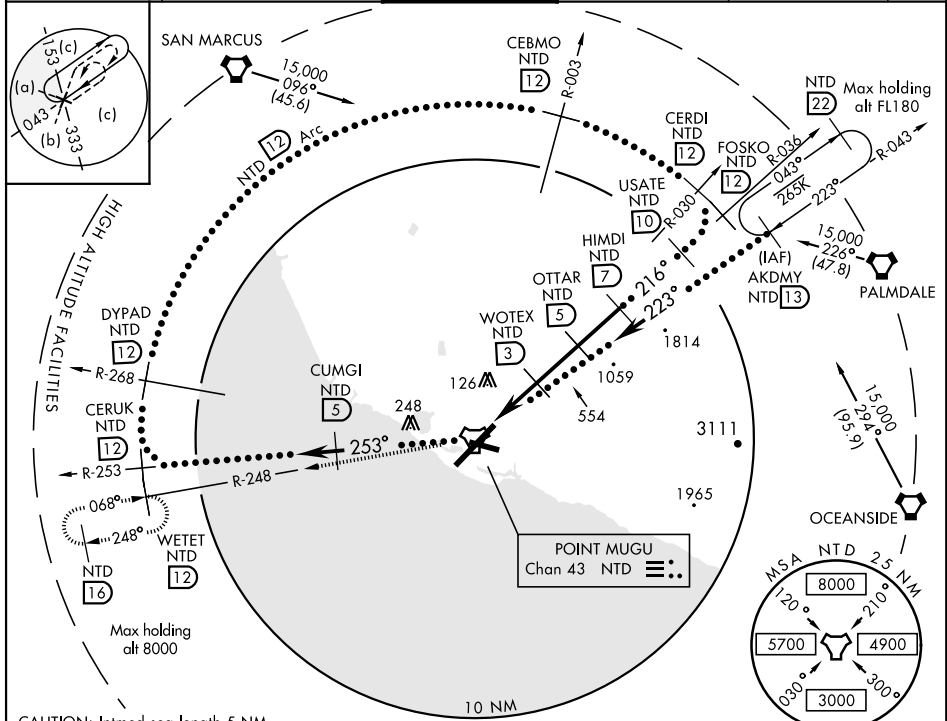
POINT MUGU NAS (NAVAL BASE VENTURA CO) (KNTD)

▼ When ALS inop, increase CAT CDE vis to 1½ miles.
** Circling not authorized E of Rwy 3-21.



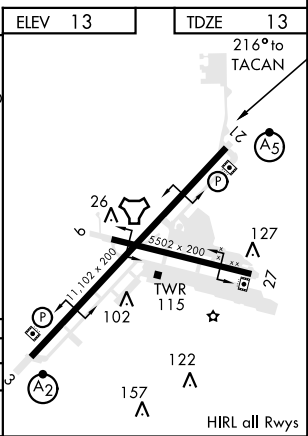
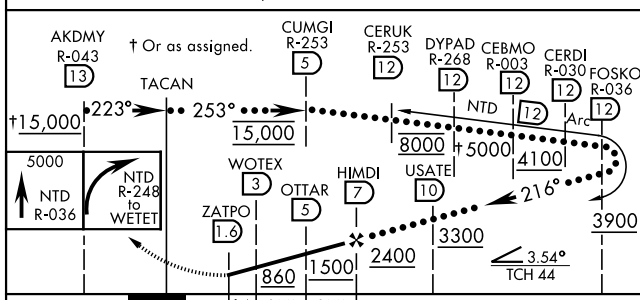
MISSED APPROACH: Climb to 5000 via NTD TACAN R-036 to NTD, then via NTD R-248 to WETET and hold, continue climb-in-hold to 5000.

ATIS ★ 125.55 363.05	POINT MUGU APP CON 128.65 307.275	POINT MUGU TOWER ★ 124.85 290.375	GND CON 121.6 360.2	CLNC DEL 120.75 279.55	ASR/ PAR
--------------------------------	---	---	-------------------------------	----------------------------------	----------



CAUTION: Intmed seg length 5 NM.

EMERG SAFE ALT 100 NM 12,100



ELEV	13	TDZE	13
CATEGORY	C	D	E
S-21*	420-¾	407 (500-¾)	
CIRCLING**	480-1½ 467 (500-1½)	580-2 567 (600-2)	860-3 847 (900-3)

OXNARD, CALIFORNIA
Amdt 2 27APR17

34°07'N-119°07'W

POINT MUGU NAS (NAVAL BASE VENTURA CO) (KNTD)

HI-TACAN RWY 21

SW-3, 10 SEP 2020 to 08 OCT 2020

SW-3, 10 SEP 2020 to 08 OCT 2020