

OXNARD, CALIFORNIA

ILS Y or LOC/DME RWY 21

LOC/DME I-RRG 109.3 Chan 30	APCH CRS 212°	Rwy Idg 11,102 TDZE 13 Arprt Elev 13
---	-------------------------	---

AL-925 [USN]

POINT MUGU NAS
(NAVAL BASE VENTURA CO)(KNTD)

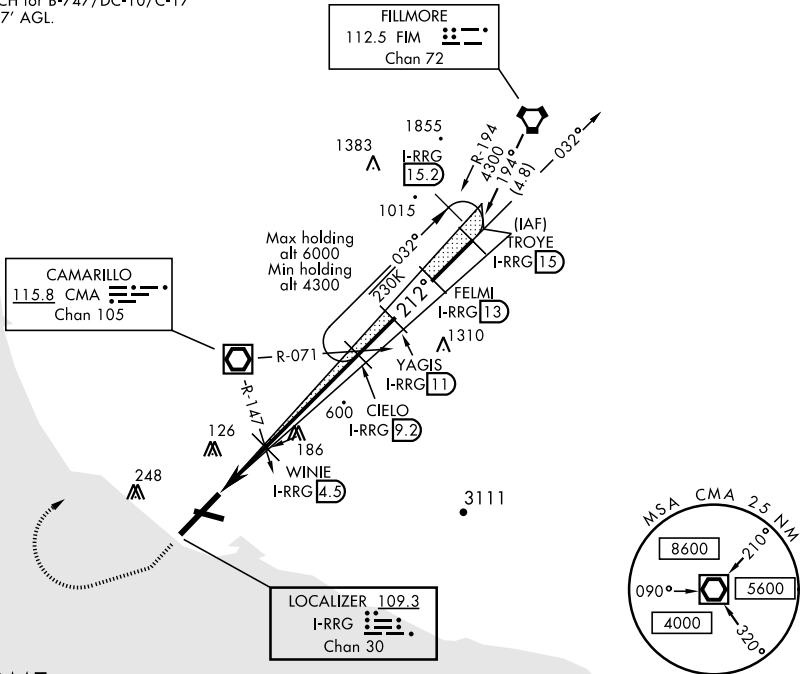
- When ALS inop, increase vis CAT ABCD to 3/4 mile.
- When ALS inop, increase vis CAT AB to 1 mile, CAT CD vis to 1 1/8 miles.
- Circling not authorized E of Rwy 3-21.



MISSED APPROACH: Climb to 500 via hdg 212°, then climbing right turn to 3000 via hdg 247°, then climbing right turn to 5000 direct CMA VOR/DME, then via CMA R-071 to CIELO and hold.

ATIS ★ 125.55 363.05	POINT MUGU APP CON 128.65 307.275	POINT MUGU TOWER ★ 124.85 290.375	GND CON 121.6 360.2	CLNC DEL 120.75 279.55	ASR/PAR
--------------------------------	---	---	-------------------------------	----------------------------------	---------

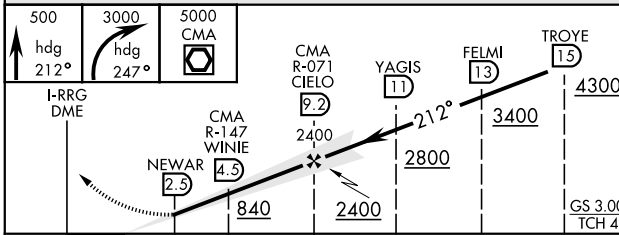
CAUTION: WCH for B-747/DC-10/C-17 type aircraft 17' AGL.



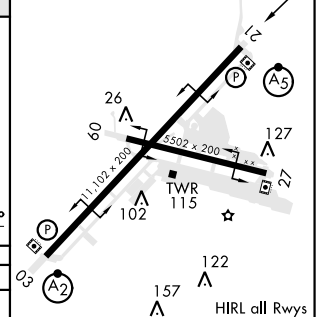
SW-3, 10 SEP 2020 to 08 OCT 2020

SW-3, 10 SEP 2020 to 08 OCT 2020

DME or RADAR REQUIRED
EMERG SAFE ALT 100 NM 12,100



ELEV 13	212° 7.2 NM from FAF
TDZE 13	



CATEGORY	A	B	C	D
S-ILS 21*	213-1/2 200 (200-1/2)			
S-LOC 21**	420-1/2	407 (500-1/2)	420-3/4	407 (500-3/4)
CIRCLING ***	440-1	480-1	480-1 1/2	580-2
	427 (500-1)	467 (500-1)	467 (500-1 1/2)	567 (600-2)

FAF to MAP 6.7 NM					
Knots	60	90	120	150	180
Min:Sec	6:42	4:28	3:21	2:41	2:14

OXNARD, CALIFORNIA
Amdt 2 27APR17

34°07'N-119°07'W

POINT MUGU NAS (KNTD)
(NAVAL BASE VENTURA CO)

ILS Y or LOC/DME RWY 21