

OXNARD, CALIFORNIA

ILS Z or LOC/DME RWY 21

LOC/DME I-RRG 109.3 Chan 30	APCH CRS 212°	Rwy Idg 11,102 TDZE 13 Arprt Elev 13
--	-------------------------	---

AL-925 [USN]

POINT MUGU NAS
(NAVAL BASE VENTURA CO)(KNTD)

▽ * When ALS inop, increase vis CAT ABCD to ¾ mile.
****** When ALS inop, increase vis CAT AB to 1 mile, CAT CD vis to 1½ miles.
******* Circling not authorized E of Rwy 3-21.

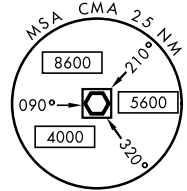
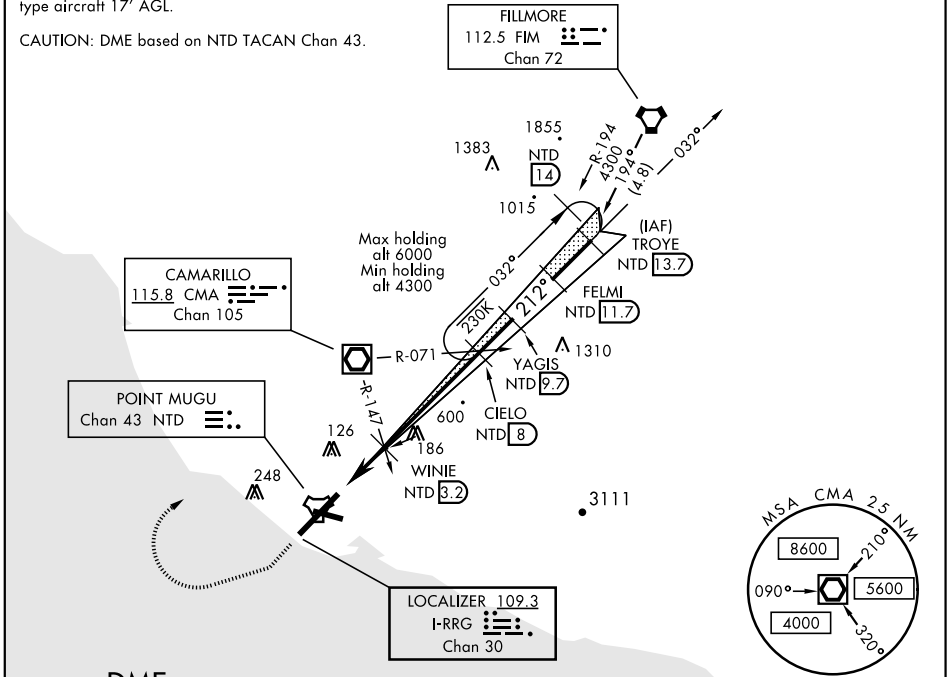


MISSED APPROACH: Climb to 500 via hdg 212°, then climbing right turn to 3000 via hdg 247°, then climbing right turn to 5000 direct CMA VOR/DME, then via CMA R-071 to CIELO and hold.

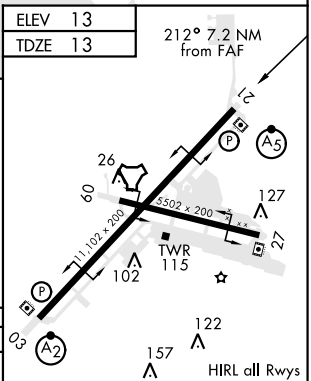
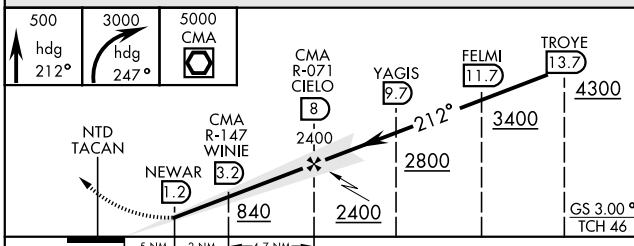
ATIS * 125.55 363.05	POINT MUGU APP CON 128.65 307.275	POINT MUGU TOWER * 124.85 290.375	GND CON 121.6 360.2	CLNC DEL 120.75 279.55	ASR/PAR
--------------------------------	---	---	-------------------------------	----------------------------------	---------

CAUTION: WCH for B-747/DC-10/C-17 type aircraft 17' AGL.

CAUTION: DME based on NTD TACAN Chan 43.



DME or RADAR REQUIRED
 EMERG SAFE ALT 100 NM 12,100



CATEGORY	A	B	C	D
S-ILS 21*	213-½		200	(200-½)
S-LOC 21**	420-½	407 (500-½)	420-¾	407 (500-¾)
CIRCLING ***	440-1	480-1	480-1 ½	580-2
	427 (500-1)	467 (500-1)	467 (500-1½)	567 (600-2)

FAF to MAP 6.7 NM					
Knots	60	90	120	150	180
Min:Sec	6:42	4:28	3:21	2:41	2:14

OXNARD, CALIFORNIA
Amdt 2 27APR17

34°07'N-119°07'W

POINT MUGU NAS (KNTD)
(NAVAL BASE VENTURA CO)

ILS Z or LOC/DME RWY 21

SW-3, 10 SEP 2020 to 08 OCT 2020

SW-3, 10 SEP 2020 to 08 OCT 2020