

OXNARD, CALIFORNIA

RNAV (GPS) RWY 21

AL-925 (USN)

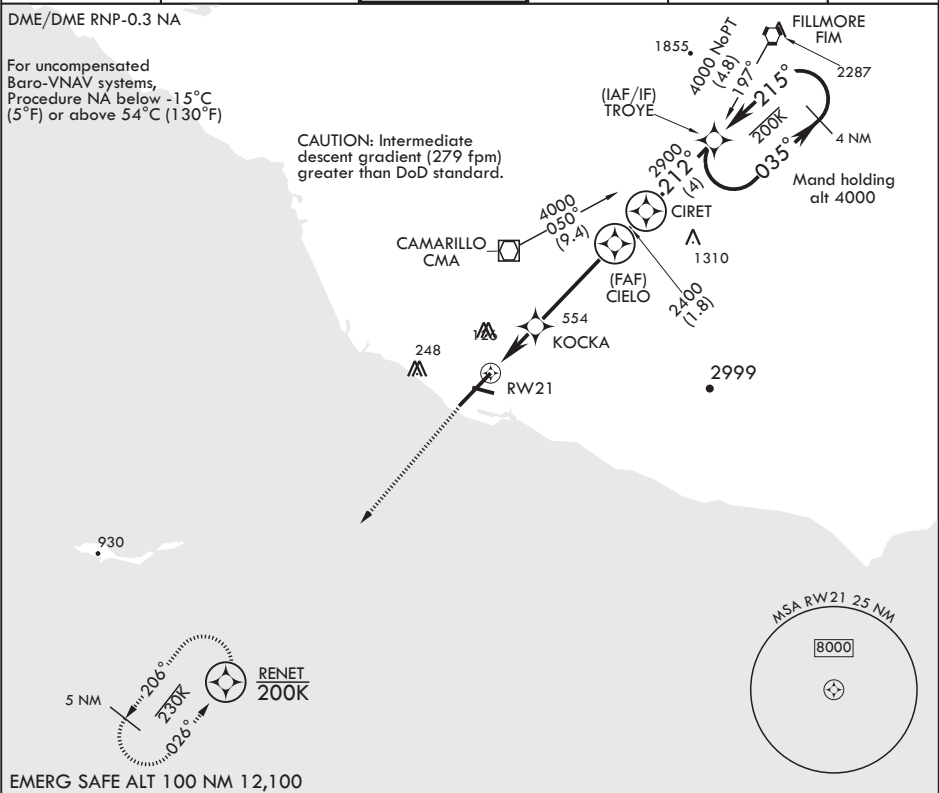
POINT MUGU NAS (NAVAL BASE VENTURA CO) (KNTD)

APCH CRS	Rwy Idg	11,102
212°	TDZE	13
	Arprt Elev	13

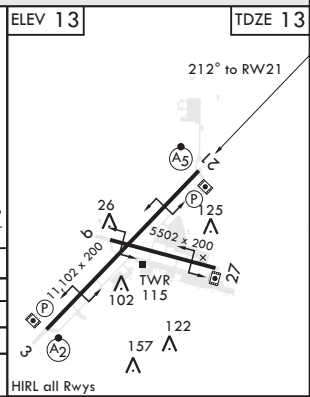
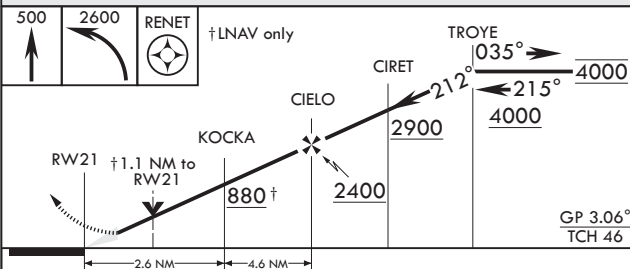
* When ALS inop increase CAT ABCD vis to 7/8 mile.
 ** When ALS inop, increase CAT AB vis to 1 mile; CAT CD vis to 1 1/8 miles.
 *** Circling not authorized E of Rwy 3-21

MALSR MISSED APPROACH: Climb to 500 then climbing left turn to 2600 direct RENET and hold.

ATIS*	APP CON/DEP CON	TOWER*	GND CON	CLINC DEL	ASR/PAR
125.55 363.05	128.65 307.275	124.85 290.375	121.6 360.2	120.75 279.55	



EMERG SAFE ALT 100 NM 12,100



CATEGORY	A	B	C	D
LNAV/VNAV DA*	289-1/2		276	(300-1/2)
LNAV MDA**	420-1/2	407 (500-1/2)	420-3/4	407 (500-3/4)
CIRCLING***	440-1	480-1	480-1 1/2	580-2
	427 (500-1)	467 (500-1)	467 (500-1 1/2)	567 (600-2)

OXNARD, CALIFORNIA

34°07'N - 119°07'W POINT MUGU NAS (NAVAL BASE VENTURA CO) (KNTD)

Amdt 4 14SEP17

RNAV (GPS) RWY 21

SW-3, 10 SEP 2020 to 08 OCT 2020

SW-3, 10 SEP 2020 to 08 OCT 2020