

OXNARD, CALIFORNIA

RNAV (GPS) RWY 3

APCH CRS 032°	Rwy Idg 11,102
	TDZE 10
	Arprt Elev 13

AL-925 (USN)

POINT MUGU NAS (NAVAL BASE VENTURA CO) (KNTD)

▼ * When ALS inop, increase CAT D vis to 7/8 mile.
 ** When ALS inop, increase CAT ABCD vis to 1 mile.
 *** Circling not authorized E of Rwy 3-21.

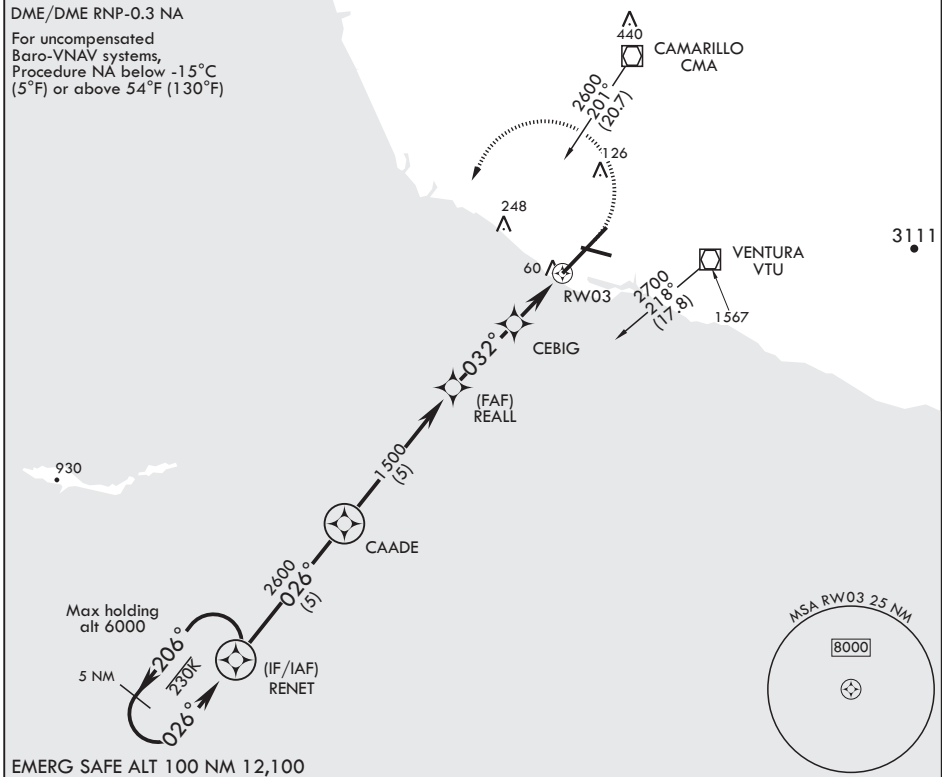


MISSED APPROACH: Climb to 500 then climbing left turn to 2600 direct RENET and hold.

ATIS* 125.55 363.05	APP CON/DEP CON 128.65 307.275	TOWER* 124.85 290.375	GND CON 121.6 360.2	CLNC DEL 120.75 279.55	ASR/PAR
-------------------------------	--	---------------------------------	-------------------------------	----------------------------------	---------

DME/DME RNP-0.3 NA

For uncompensated Baro-VNAV systems, Procedure NA below -15°C (5°F) or above 54°F (130°F)



SW-3, 10 SEP 2020 to 08 OCT 2020

SW-3, 10 SEP 2020 to 08 OCT 2020

EMERG SAFE ALT 100 NM 12,100

	500	2600	RENET	ELEV 13	TDZE 10
	<p>GP 3.00° TCH 46</p> <p>† LNAV only</p> <p>† 0.8 NM to RWY 3</p> <p>† 680</p> <p>2.5 NM, 2 NM</p>				
CATEGORY	A	B	C	D	
LNAV/VNAV DA*	261-3/4	251	(300-3/4)	266-3/4 256 (300-3/4)	
LNAV MDA**	320-3/4		310	(400-3/4)	
CIRCLING***	440-1 427 (500-1)	480-1 467 (500-1)	480-1 1/2 467 (500-1 1/2)	580-2 567 (600-2)	

OXNARD, CALIFORNIA

34°07'N - 119°07'W POINT MUGU NAS (NAVAL BASE VENTURA CO) (KNTD)

Amdt 4 14SEP17

RNAV (GPS) RWY 3