

17173

SAN MARCUS-NINE DEPARTURE

POINT MUGU NAS (NAVAL BASE VENTURA CO) (KNTD)
(RZS 9 • RZS)

OXNARD, CALIFORNIA

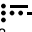
ATIS ★ 125.55 363.05
CLNC DEL
120.75 279.55
GND CON
121.6 360.2
POINT MUGU TOWER ★
124.85 290.375
POINT MUGU DEP CON
128.65 307.275

SHL-925 [USN]

Rwy	Knots	60	120	180	240	300	360
* 03(a)	V/V(fpm)	205	410	615	820	1025	1230
† 21(b)	V/V(fpm)	216	432	648	864	1080	1296
† 27(b)	V/V(fpm)	214	428	642	856	1070	1284

* Minimum † ATC Climb Rate

(a) to 700
(b) to 8900

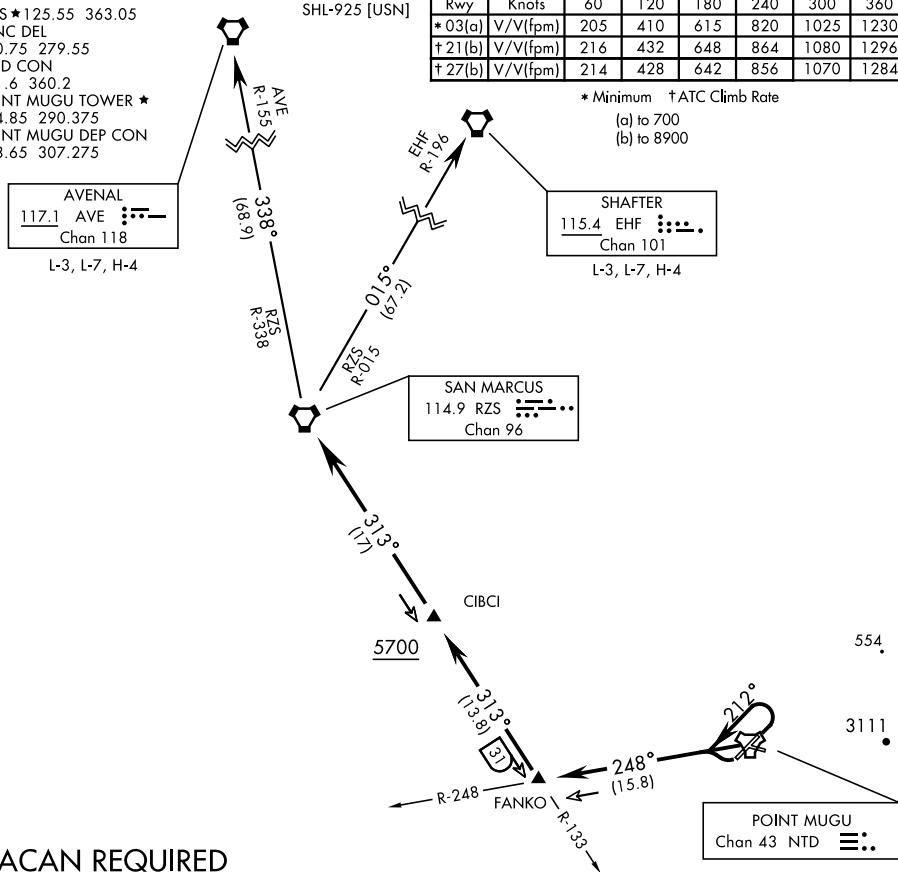
AVENAL
117.1 AVE 
Chan 118

L-3, L-7, H-4

SHAFTER
115.4 EHF 
Chan 101

L-3, L-7, H-4

SAN MARCUS
114.9 RZS 
Chan 96



TACAN REQUIRED

DEPARTURE ROUTE DESCRIPTION

TAKE-OFF RWY 3: Climbing left turn to 112° within 3 DME of NTD TACAN, thence...

TAKE-OFF RWY 21: Turn right, thence...

TAKE-OFF RWY 27: Turn left, thence...

Intercept NTD R-248 and via NTD R-248 to FANKO (NTD R-248/16 DME), then via RZS VORTAC R-133 to RZS VORTAC, then via assigned routing.
Cross CIBCI (RZS R-133/17 DME) at or above 5700.

AVENAL TRANSITION (RZS 9•AVE): From over SAN MARCUS VORTAC via RZS R-338 to AVENAL VORTAC. Cross SAN MARCUS VORTAC at or above 7900.

SHAFTER TRANSITION (RZS 9•EHF): From over SAN MARCUS VORTAC via RZS R-015 to SHAFTER VORTAC. Cross SAN MARCUS VORTAC at or above 8900.

SAN MARCUS-NINE DEPARTURE

(RZS 9 • RZS)

OXNARD, CALIFORNIA

POINT MUGU NAS (NAVAL BASE VENTURA CO) (KNTD)