

WAAS CH 78123 W26A	APP CRS 257°	Rwy Idg TDZE 384 Apt Elev 403	6118 384 403
--	------------------------	---	---

RNAV (GPS) RWY 26

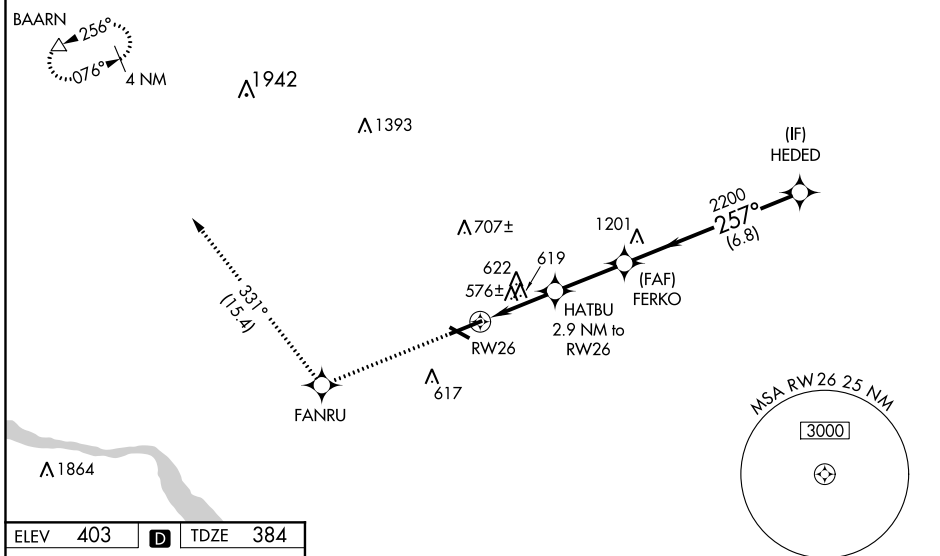
LANCASTER (LNS)

⚠ Night landing: Rwy 13, 31 NA. For uncompensated Baro-VNAV systems, LNAV/VNAV NA below -1.5°C (5°F) or above 41°C (105°F). DME/DME RNP-0.3 NA. Helicopter visibility reduction below 1 SM NA. When local altimeter setting not received, use Harrisburg Intl altimeter setting and increase all DA 64 feet, all MDA 80 feet, increase LPV and LNAV/VNAV visibility all Cats and LNAV and Circling Cat C and D visibility ¼ mile. Baro-VNAV and VDP NA when using Harrisburg Intl altimeter setting.

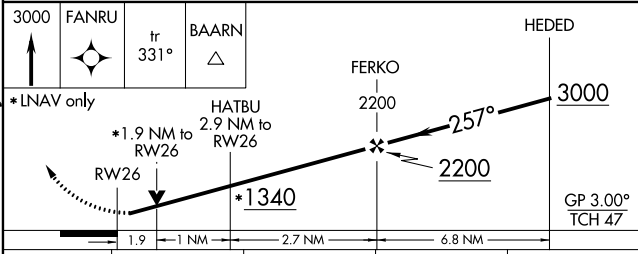
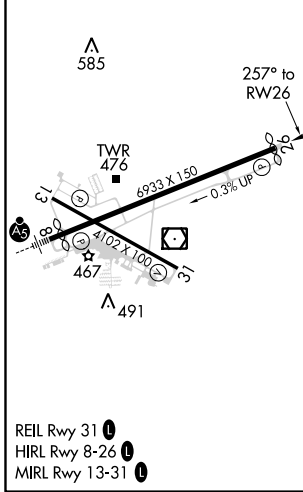
MISSED APPROACH:
Climb to 3000 direct FANRU and on track 331° to BAARN and hold.

ATIS 125.675	HARRISBURG APP CON 126.45 281.525	LANCASTER TOWER * 120.9 (CTAF) 0 251.1	GND CON 121.8	UNICOM 122.95
------------------------	---	--	-------------------------	-------------------------

RADAR REQUIRED



ELEV 403	D	TDZE 384
-----------------	----------	-----------------



CATEGORY	A	B	C	D
LPV DA		634-3/4	250 (300-3/4)	
LNAV/VNAV DA		905-1 3/4	521 (500-1 3/4)	
LNAV MDA	1020-1	636 (700-1)	1020-1 7/8	636 (700-1 7/8)
CIRCLING	1020-1	617 (700-1)	1020-1 7/8 617 (700-1 7/8)	1060-2 657 (700-2)

NE-4, 10 SEP 2020 to 08 OCT 2020

NE-4, 10 SEP 2020 to 08 OCT 2020