

VOR/DME LRP <b>117.3</b> Chan 120	APP CRS <b>319°</b>	Rwy Idg <b>4102</b> TDZE <b>403</b> Apt Elev <b>403</b>
---	------------------------	---

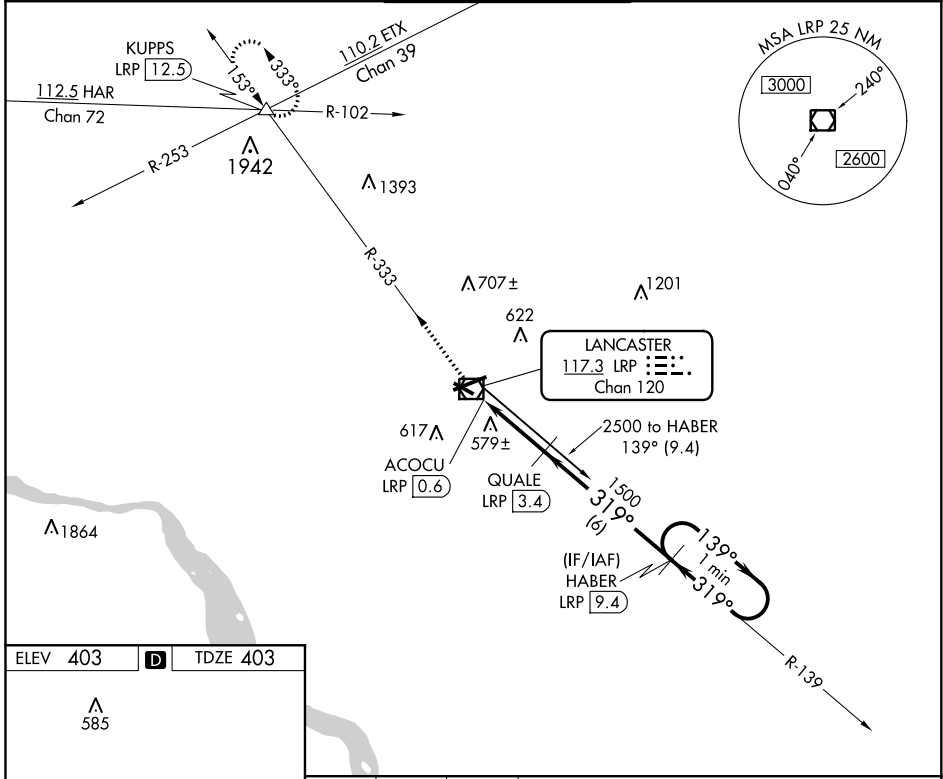
# VOR/DME RWY 31

LANCASTER (LNS)

**⚠** Night landing: Rwy 13, 31 NA. Helicopter visibility reduction below 1 SM NA.  
**⚠** When local altimeter setting not received, use Harrisburg Intl altimeter setting and increase all MDA 80 feet, increase Cat C/D visibility 1/4 mile.

MISSED APPROACH: Climb to 3000 via LRP VOR/DME R-333 to KUPPS INT/LRP 12.5 DME and hold.

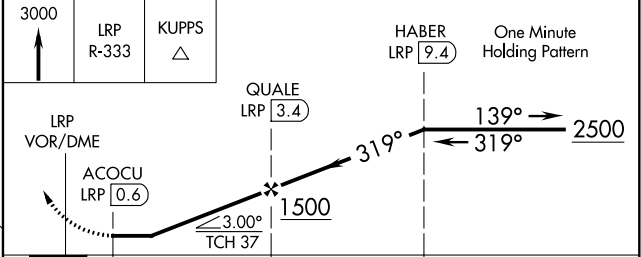
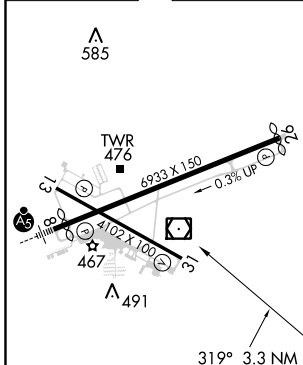
ATIS <b>125.675</b>	HARRISBURG APP CON <b>126.45 281.525</b>	LANCASTER TOWER★ <b>120.9 (CTAF) 251.1</b>	GND CON <b>121.8</b>	UNICOM <b>122.95</b>
------------------------	---	---	-------------------------	-------------------------



NE-4, 10 SEP 2020 to 08 OCT 2020

NE-4, 10 SEP 2020 to 08 OCT 2020

ELEV 403	<b>D</b>	TDZE 403
----------	----------	----------



CATEGORY	A	B	C	D
S-31	840-1	437 (500-1)	840-1 1/4 437 (500-1 1/4)	840-1 1/2 437 (500-1 1/2)
CIRCLING	940-1	537 (600-1)	940-1 1/2 537 (600-1 1/2)	1080-2 1/4 677 (700-2 1/4)