
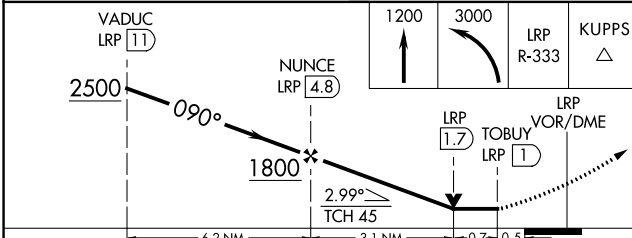
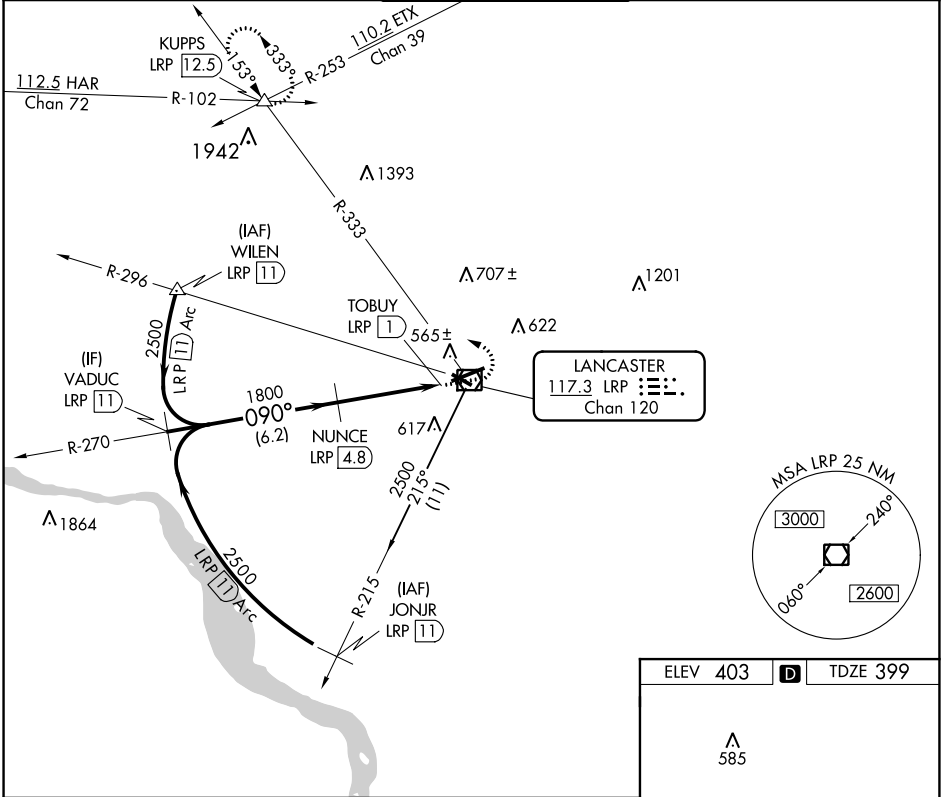


VOR/DME LRP	APP CRS	Rwy Idg	<b>6118</b>
<b>117.3</b>	<b>090°</b>	TDZE	<b>399</b>
Chan <b>120</b>		Apt Elev	<b>403</b>

# VOR/DME RWY 8

LANCASTER (LNS)

<p><b>⚠</b> Night landing: Rwy 13, 31 NA. Inop table does not apply.  <b>⚠</b> When local altimeter setting not received, use Harrisburg Intl altimeter setting and increase all MDA 80 feet, and S-8 and Circling Cats C and D visibility ¼ mile.</p>	<p>MALSR</p> 	<p>MISSED APPROACH: Climb to 1200 then climbing left turn to 3000 via LRP VOR/DME R-333 to KUPPS INT/LRP 12.5 DME and hold.</p>		
<p>ATIS <b>125.675</b></p>	<p>HARRISBURG APP CON <b>126.45 281.525</b></p>	<p>LANCASTER TOWER★ <b>120.9 (CTAF) 251.1</b></p>	<p>GND CON <b>121.8</b></p>	<p>UNICOM <b>122.95</b></p>



ELEV	403	TDZE	399
------	-----	------	-----

REIL Rwy 31  
HIRL Rwy 8-26  
MIRL Rwy 13-31

CATEGORY	A	B	C	D
S-8	820-1	421 (500-1)	820-1¼	421 (500-1¼)
CIRCLING	940-1	537 (600-1)	940-1½	1060-2 537 (600-1½) 657 (700-2)

NE-4, 10 SEP 2020 to 08 OCT 2020

NE-4, 10 SEP 2020 to 08 OCT 2020