

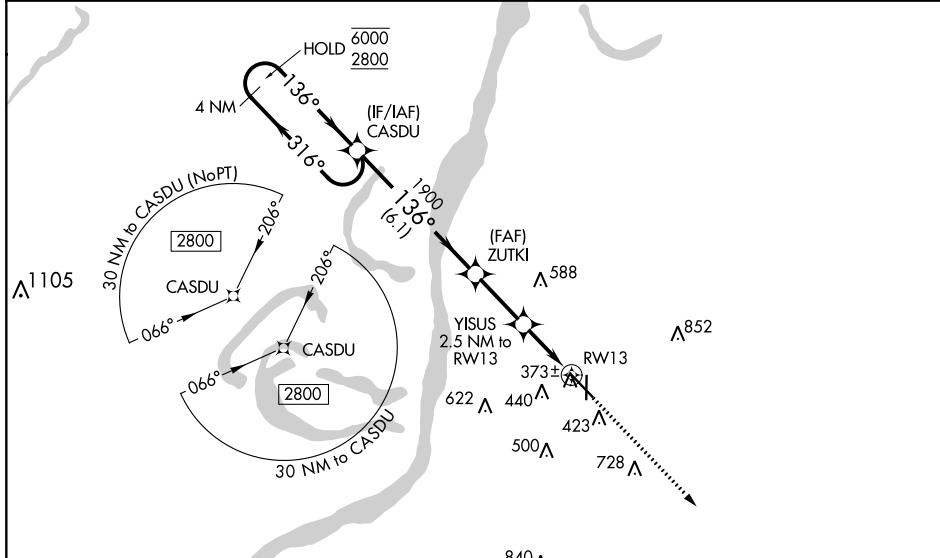
WAAS CH 50505 W13A	APP CRS 136°	Rwy ldg 6500 TDZE 266 Apt Elev 272
--	------------------------	---

RNAV (GPS) RWY 13

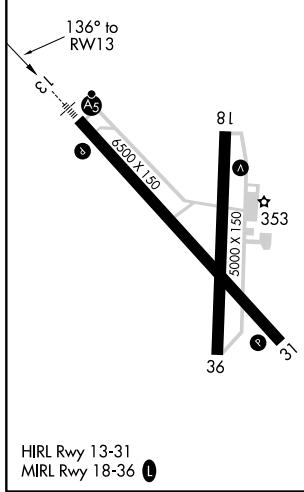
HARDY-ANDERS FIELD NATCHEZ-ADAMS COUNTY (HE/Z)

<p>RNP APCH.</p> <p>▽ Circling to Rwy 36 NA at night. For uncompensated Baro-VNAV systems, LNAV/VNAV NA below -15° C or above 54° C. For inop ALS, increase LNAV/VNAV all Cats visibility to 7/8 SM and LNAV Cat C and D visibility to 1 1/8 SM.</p>		<p>MALS R</p>	<p>MISSED APPROACH: Climb to 2800 direct WEGRA and hold.</p>
---	--	---------------	--

AWOS-3PT 124.675	HOUSTON CENTER 120.975 299.6	UNICOM 122.8 (CTAF)
----------------------------	--	-------------------------------



ELEV 272	TDZE 266
----------	----------



<p>4 NM Holding Pattern</p> <p>6000 ← 316°</p> <p>2800 → 136°</p> <p>GP 3.00° TCH 54</p>	CASDU		ZUTKI	YISUS	2.5 NM to RWY 13	*1.1 NM to RWY 13	2800 WEGRA	4 NM WEGRA																													
	<p>6.1 NM</p>		1900	*1100	1.4 NM	1.1 NM	*LNAV only																														
<table border="1"> <thead> <tr> <th>CATEGORY</th> <th>A</th> <th>B</th> <th>C</th> <th>D</th> </tr> </thead> <tbody> <tr> <td>LPV DA</td> <td colspan="2">466-1/2</td> <td colspan="2">200 (200-1/2)</td> </tr> <tr> <td>LNAV/VNAV DA</td> <td colspan="2">534-1/2</td> <td colspan="2">268 (300-1/2)</td> </tr> <tr> <td>LNAV MDA</td> <td colspan="2">680-1/2 414 (500-1/2)</td> <td colspan="2">680-3/4 414 (500-3/4)</td> </tr> <tr> <td rowspan="2"> CIRCLING</td> <td>740-1</td> <td>800-1</td> <td>1020-2 1/4</td> <td>1220-3</td> </tr> <tr> <td>468 (500-1)</td> <td>528 (600-1)</td> <td>748 (800-2 1/4)</td> <td>948 (1000-3)</td> </tr> </tbody> </table>	CATEGORY	A	B	C	D	LPV DA	466-1/2		200 (200-1/2)		LNAV/VNAV DA	534-1/2		268 (300-1/2)		LNAV MDA	680-1/2 414 (500-1/2)		680-3/4 414 (500-3/4)		CIRCLING	740-1	800-1	1020-2 1/4	1220-3	468 (500-1)	528 (600-1)	748 (800-2 1/4)	948 (1000-3)								
CATEGORY	A	B	C	D																																	
LPV DA	466-1/2		200 (200-1/2)																																		
LNAV/VNAV DA	534-1/2		268 (300-1/2)																																		
LNAV MDA	680-1/2 414 (500-1/2)		680-3/4 414 (500-3/4)																																		
CIRCLING	740-1	800-1	1020-2 1/4	1220-3																																	
	468 (500-1)	528 (600-1)	748 (800-2 1/4)	948 (1000-3)																																	

SC-4, 10 SEP 2020 to 08 OCT 2020

SC-4, 10 SEP 2020 to 08 OCT 2020