

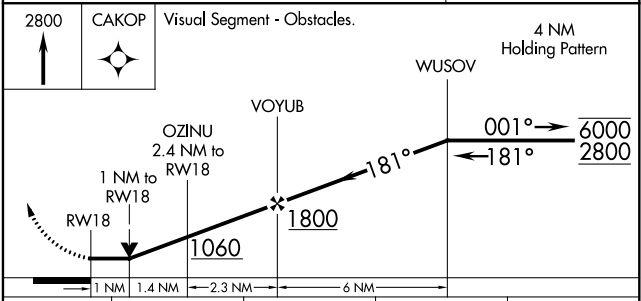
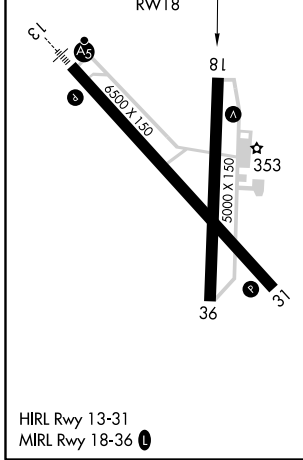
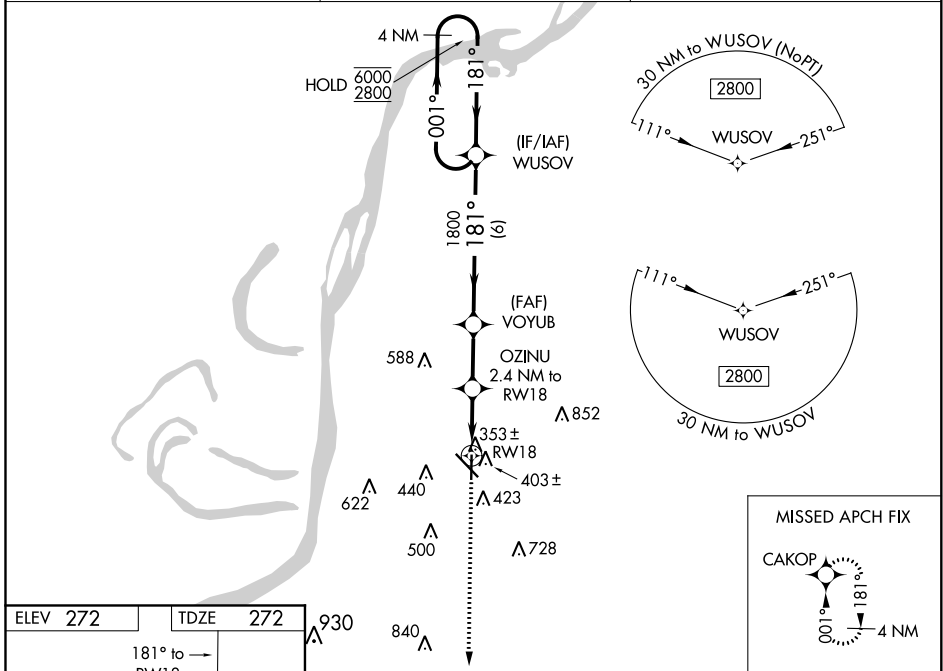
WAAS CH 45734 W18A	APP CRS 181°	Rwy ldg TDZE Apt Elev	5000 272 272
--------------------------	-----------------	-----------------------------	--------------------

RNAV (GPS) RWY 18

HARDY-ANDERS FIELD NATCHEZ-ADAMS COUNTY (HE/Z)

RNP APCH. ▼ Circling Rwy 36 NA at night. Rwy 18 helicopter visibility reduction below 3/4 SM NA. ▲	MISSED APPROACH: Climb to 2800 direct CAKOP and hold.
--	---

AWOS-3PT 124.675	HOUSTON CENTER 120.975 299.6	UNICOM 122.8 (CTAF) ①
---------------------	---------------------------------	--------------------------



CATEGORY	A	B	C	D
LP MDA	620-1 348 (400-1)			
LNAV MDA	660-1	388 (400-1)	660-1 1/8	388 (400-1 1/8)
☑ CIRCLING	740-1 468 (500-1)	800-1 528 (600-1)	1020-2 1/4 748 (800-2 1/4)	1220-3 948 (1000-3)

SC-4, 10 SEP 2020 to 08 OCT 2020

SC-4, 10 SEP 2020 to 08 OCT 2020