

VOR/DME HEZ <b>110.0</b> Chan <b>37</b>	APP CRS <b>197°</b>	Rwy Idg TDZE <b>5000</b> <b>272</b>	Apt Elev <b>272</b>
---	------------------------	---	------------------------

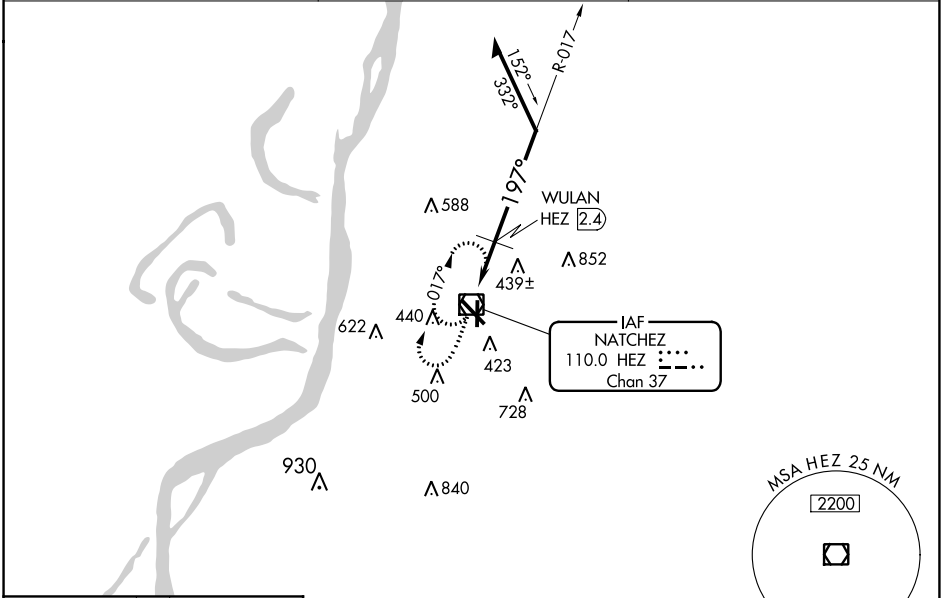
# VOR RWY 18

HARDY-ANDERS FIELD NATCHEZ-ADAMS COUNTY (HEZ)

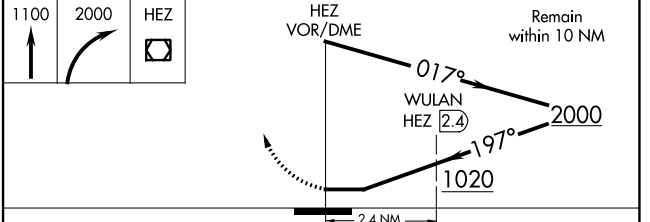
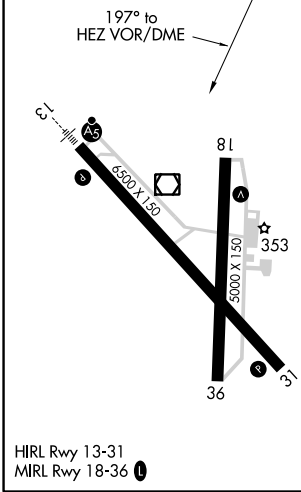
**⚠** Circling to Rwy 36 NA at night.  
Rwy 18 helicopter visibility reduction below 1 SM NA.  
Straight-in and Circling Rwy 18 NA at night.

**⚠** MISSED APPROACH: Climb to 1100 then climbing right turn to 2000 in HEZ VOR/DME holding pattern, continue climb-in-hold to 2000.

AWOS-3PT <b>124.675</b>	HOUSTON CENTER <b>120.975 299.6</b>	UNICOM <b>122.8 (CTAF) ①</b>
----------------------------	--	---------------------------------



ELEV 272	TDZE 272
----------	----------



CATEGORY	A	B	C	D
S-18	1020-1 748 (800-1)	1020-1¼ 748 (800-1¼)	1020-2 748 (800-2)	1220-3 948 (1000-3)
<b>C</b> CIRCLING	1020-1 748 (800-1)	1020-1¼ 748 (800-1¼)	1020-2¼ 748 (800-2¼)	1220-3 948 (1000-3)
WULAN FIX MINIMUMS				
S-18	700-1	428 (500-1)	700-1¼	428 (500-1¼)
<b>C</b> CIRCLING	740-1 468 (500-1)	800-1 528 (600-1)	1020-2¼ 748 (800-2¼)	1220-3 948 (1000-3)

# VOR RWY 18

SC-4, 10 SEP 2020 to 08 OCT 2020

SC-4, 10 SEP 2020 to 08 OCT 2020