

WAAS CH 86604 W25A	APP CRS 245°	Rwy Idg 4158 TDZE 144 Apt Elev 151
--	------------------------	---

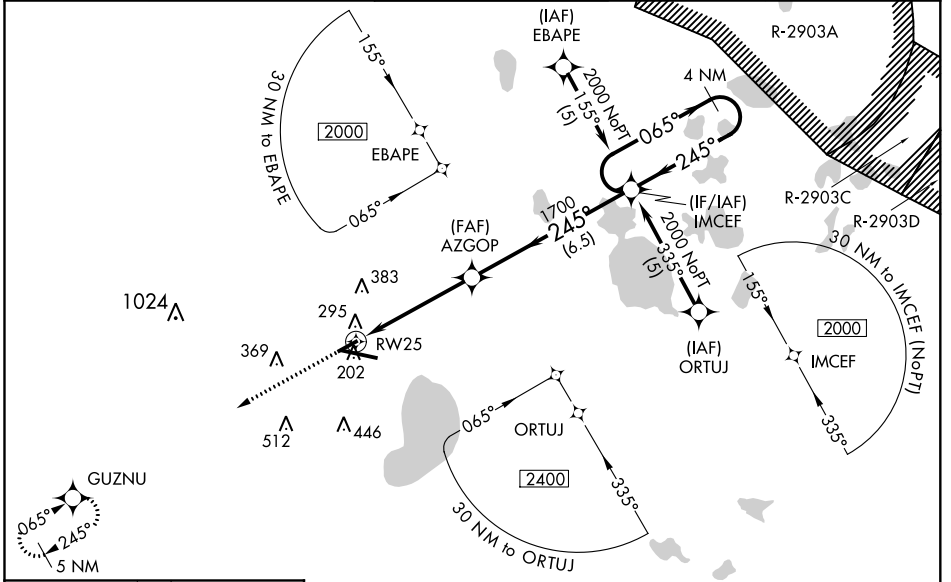
RNAV (GPS) RWY 25

GAINESVILLE RGNL (GNV)

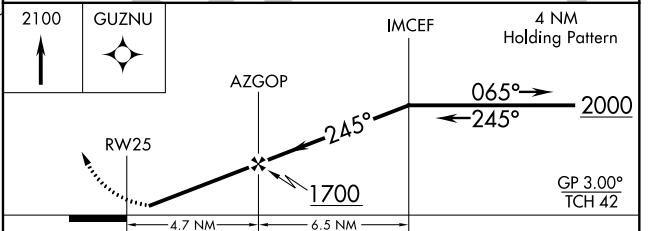
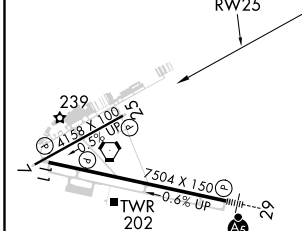
⚠ Baro-VNAV NA when using Ocala Intl-Jim Taylor altimeter setting. For uncompensated Baro-VNAV systems, LNAV/VNAV NA below -15° C (5° F) or above 48° C (118° F).
⚠ DME/DME RNP-0.3 NA. Visibility reduction by helicopters NA. When local altimeter setting not received, use Ocala Intl-Jim Taylor Field altimeter setting and increase all DA 81 feet and all MDA 100 feet. Increase LPV all Cats, LNAV/VNAV all Cats, LNAV Cat C and Circling Cat D visibility ¼ mile. Increase LNAV Cat D visibility ½ mile. When VGSI inoperative, straight-in/Circling Rwy 25 procedure NA at night.

MISSED APPROACH: Climb to 2100 direct GUZNU and hold.

ATIS 127.15	JACKSONVILLE APP CON 118.175 338.25	GAINESVILLE TOWER★ 119.55 (CTAF) 0 353.7	GND CON 121.7	UNICOM 122.95
-----------------------	---	--	-------------------------	-------------------------



ELEV 151	TDZE 144
----------	----------



CATEGORY	A	B	C	D
LPV DA	501-1¼ 357 (400-1¼)			
LNAV/VNAV DA	694-2 550 (600-2)			
LNAV MDA	560-1	416 (500-1)	560-1¼	416 (500-1¼)
CIRCLING	620-1	469 (500-1)	620-1½	740-2
			469 (500-1½)	589 (600-2)

REIL Rwy 11
 MIRL Rwy 7-25
 HIRL Rwy 11-29

SE-3, 10 SEP 2020 to 08 OCT 2020

SE-3, 10 SEP 2020 to 08 OCT 2020