


WAAS CH <b>60916</b> <b>W29A</b>	APP CRS <b>286°</b>	Rwy Idg TDZE Apt Elev	<b>7504</b> <b>122</b> <b>151</b>
--	------------------------	-----------------------------	---

# RNAV (GPS) RWY 29

GAINESVILLE RGNL (G.V.)

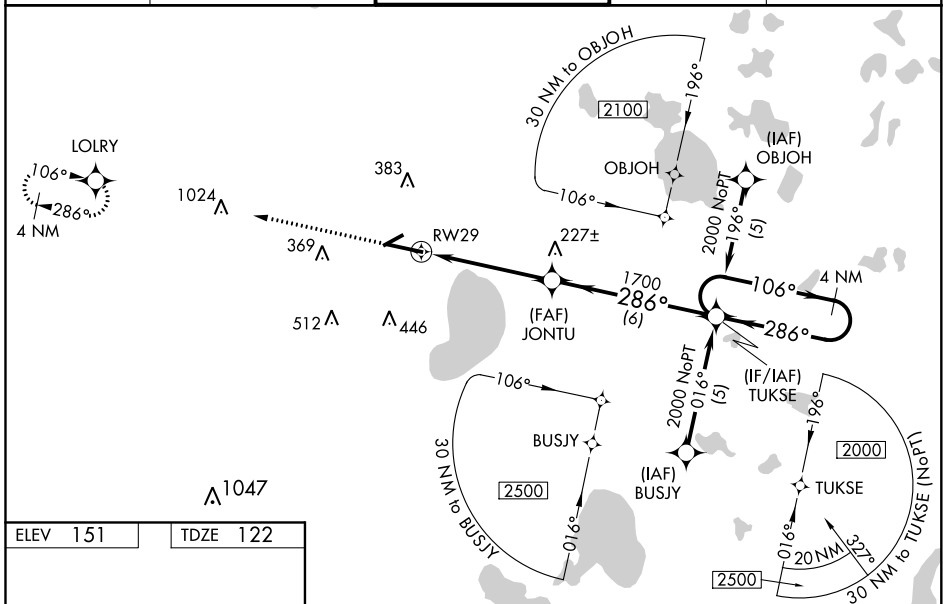
**⚠** DME/DME RNP-0.3 NA. For inoperative MALSR, increase LPV all Cats visibility to RVR 5000 and increase LNAV Cat D visibility to RVR 6000. For inoperative MALSR using Ocala Intl-Jim Taylor Field altimeter setting, increase LPV all Cats visibility to 1 1/2 mile. When local altimeter setting not received, use Ocala Intl-Jim Taylor Field altimeter setting and increase all DA 81 feet and all MDA 100 feet. Increase LPV all Cats and LNAV/VNAV all Cats visibility to RVR 5000, LNAV Cat C visibility to RVR 4000, and Circling Cat D visibility to 2 1/2 mile. For uncompensated Baro-VNAV systems, LNAV/VNAV NA below -1.5°C (5°F) or above 48°C (118°F). Baro-VNAV and VDP NA when using Ocala Intl-Jim Taylor Field altimeter setting. When VGSI inoperative, Circling Rwy 25 NA at night.

MALSR

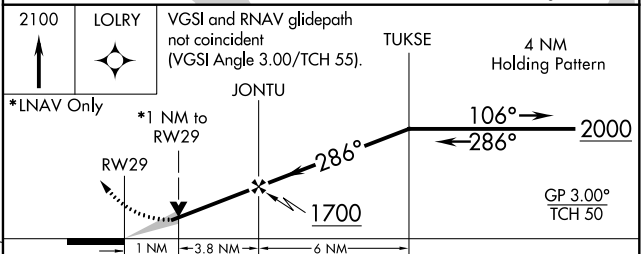
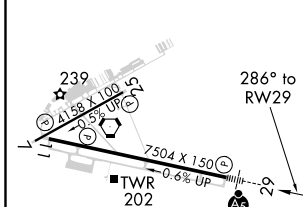


MISSED APPROACH:  
Climb to 2100 direct  
LOLRY and hold.

ATIS <b>127.15</b>	JACKSONVILLE APP CON <b>118.175 338.25</b>	GAINESVILLE TOWER★ <b>119.55 (CTAF) 0 353.7</b>	GND CON <b>121.7</b>	UNICOM <b>122.95</b>
-----------------------	---	--	-------------------------	-------------------------



ELEV 151	TDZE 122
----------	----------



CATEGORY	A	B	C	D
LPV DA		420/24	298 (300-1/2)	
LNAV/VNAV DA		480/40	358 (400-3/4)	
LNAV MDA		500/24	378 (400-1/2)	500/50 378 (400-1)
CIRCLING	620-1	469 (500-1)	620-1 1/2 469 (500-1 1/2)	740-2 589 (600-2)

REIL Rwy 11  
MIRL Rwy 7-25  
HIRL Rwy 11-29

SE-3, 10 SEP 2020 to 08 OCT 2020

SE-3, 10 SEP 2020 to 08 OCT 2020