

RNAV (GPS) RWY 7

GAINESVILLE RGNL (GNTV)

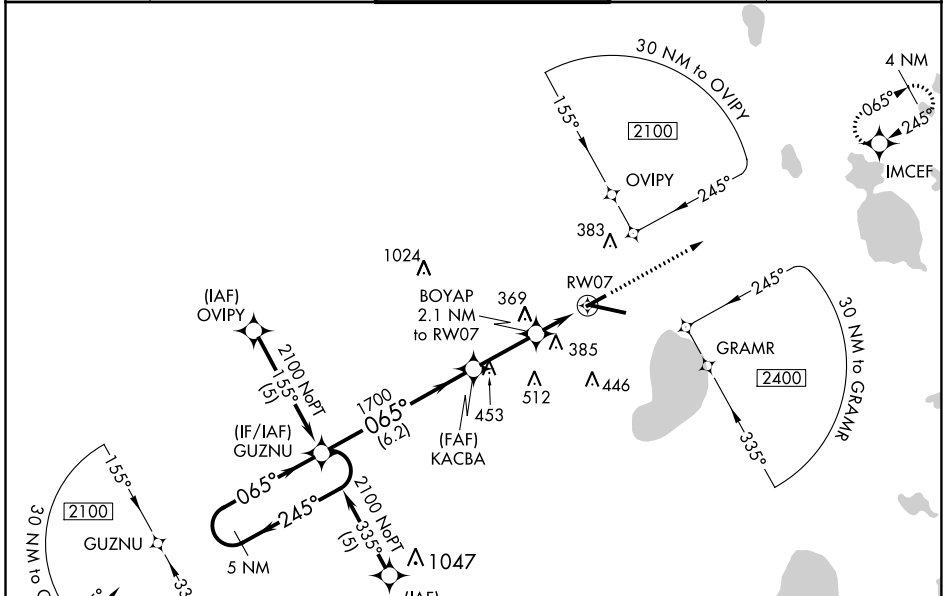
APP CRS	Rwy Idg	4158
065°	TDZE	151
	Apt Elev	151

▽ DME/DME RNP-0.3 NA. Visibility reduction by helicopters NA. VDP NA when using Ocala Intl-Jim Taylor Fld altimeter setting.

▲ When local altimeter setting not received, use Ocala Intl-Jim Taylor Field altimeter setting and increase all MDA 100 feet. Increase LNAV Cat C and Cat D, and Circling Cat D visibility 1/4 mile. When VGSi inoperative, Circling Rwy 25 NA at night.

MISSED APPROACH: Climb to 2000 direct IMCEF and hold.

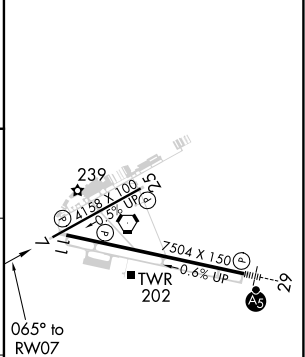
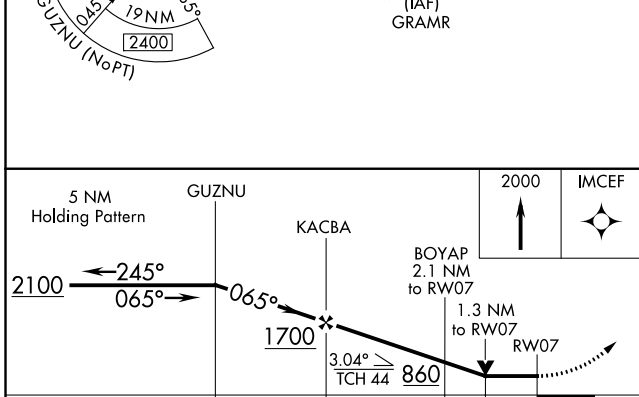
ATIS 127.15	JACKSONVILLE APP CON 118.175 338.25	GAINESVILLE TOWER★ 119.55 (CTAF) 0 353.7	GND CON 121.7	UNICOM 122.95
-----------------------	---	--	-------------------------	-------------------------



SE-3, 10 SEP 2020 to 08 OCT 2020

SE-3, 10 SEP 2020 to 08 OCT 2020

ELEV 151	TDZE 151
----------	----------



CATEGORY	A	B	C	D
LNAV MDA	620-1 469 (500-1)		620-1 1/4 469 (500-1 1/4)	620-1 1/2 469 (500-1 1/2)
CIRCLING	620-1 469 (500-1)		620-1 1/2 469 (500-1 1/2)	740-2 589 (600-2)

REIL Rwy 11
MIRL Rwy 7-25
HIRL Rwy 11-29