

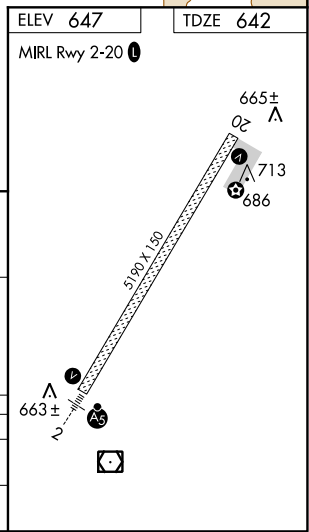
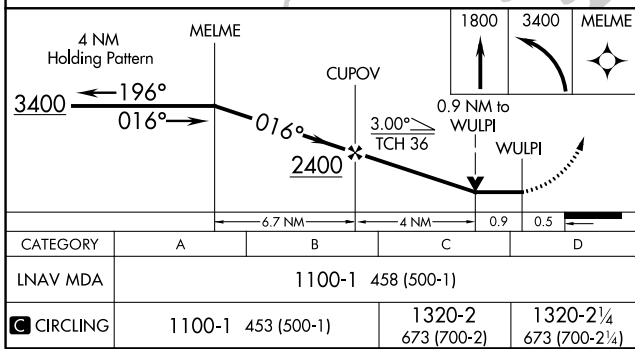
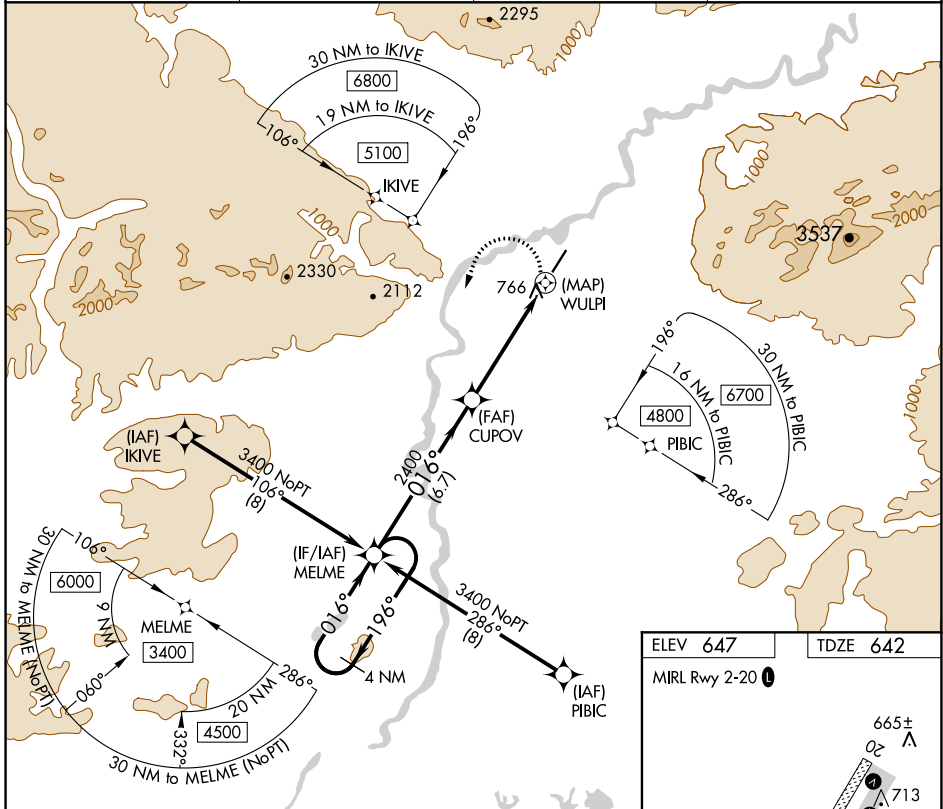
# RNAV (GPS) RWY 2

BETTLES(BTT)(PABT)

APP CRS	Rwy Idg	<b>5190</b>
<b>016°</b>	TDZE	<b>642</b>
	Apt Elev	<b>647</b>

RNP APCH.	MALSR	MISSED APPROACH: (Do not exceed 2300 until MELME) Climb to 1800 then climbing left turn to 3400 direct MELME and hold.
<p>⚠ Inoperative table does not apply. Circling NA east of Rwy 2-20.</p> <p>⚠ For inop ALS, increase Cat C/D visibility to 1 3/4 SM. Rwy 2 helicopter visibility reduction below 3/4 SM NA.</p> <p>❄ -45°C</p>		

ASOS <b>135.45</b>	ANCHORAGE CENTER <b>124.6 352.0</b>	FAIRBANKS RADIO <b>122.2</b>	CTAF <b>122.9</b>
-----------------------	--	---------------------------------	----------------------



AK, 10 SEP 2020 to 05 NOV 2020

AK, 10 SEP 2020 to 05 NOV 2020