

APP CRS	Rwy Idg	5190
191°	TDZE	647
	Apt Elev	647

RNAV (GPS) RWY 20

BETTLES(BTT)(PABT)

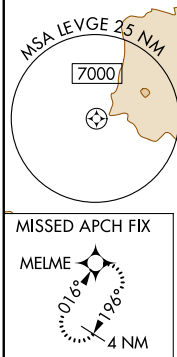
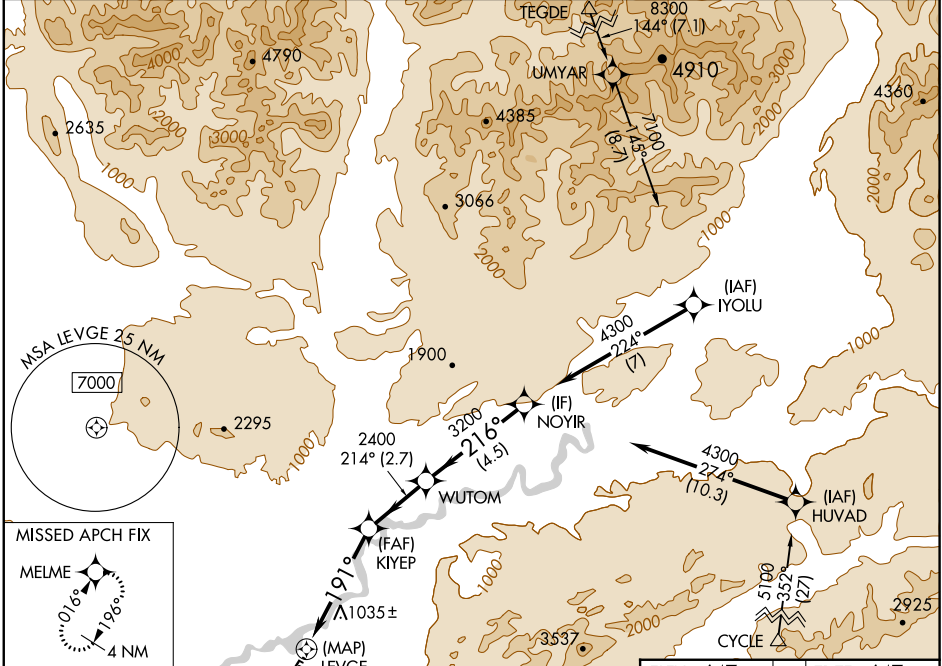
RNP APCH.

⚠ Circling NA east of Rwy 2-20. Rwy 20 helicopter visibility reduction below 3/4 SM NA.

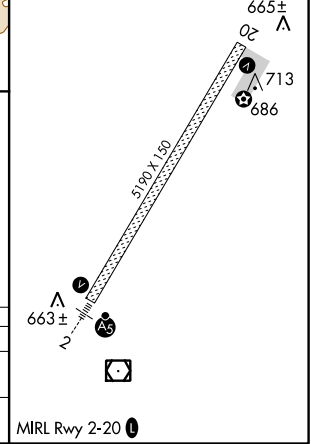
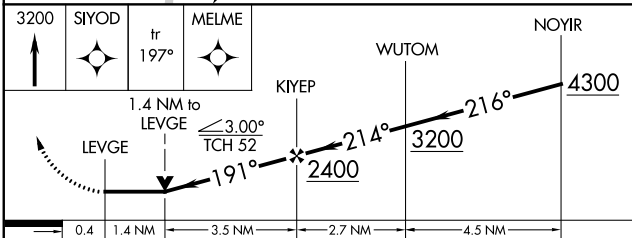
❄ -45°C

MISSED APPROACH: Climb to 3200 direct SIYOD and on track 197° to MELME and hold.

ASOS 135.45	ANCHORAGE CENTER 124.6 352.0	FAIRBANKS RADIO 122.2	CTAF 122.9 0
-----------------------	--	---------------------------------	------------------------



ELEV 647	TDZE 647
----------	----------



CATEGORY	A	B	C	D
LNVA MDA	1300-1 653 (700-1)		1300-1 7/8 653 (700-1 7/8)	
CIRCLING	1300-1 653 (700-1)		1320-2 673 (700-2)	1320-2 1/4 673 (700-2 1/4)

MIRL Rwy 2-20 0

AK, 10 SEP 2020 to 05 NOV 2020

AK, 10 SEP 2020 to 05 NOV 2020