

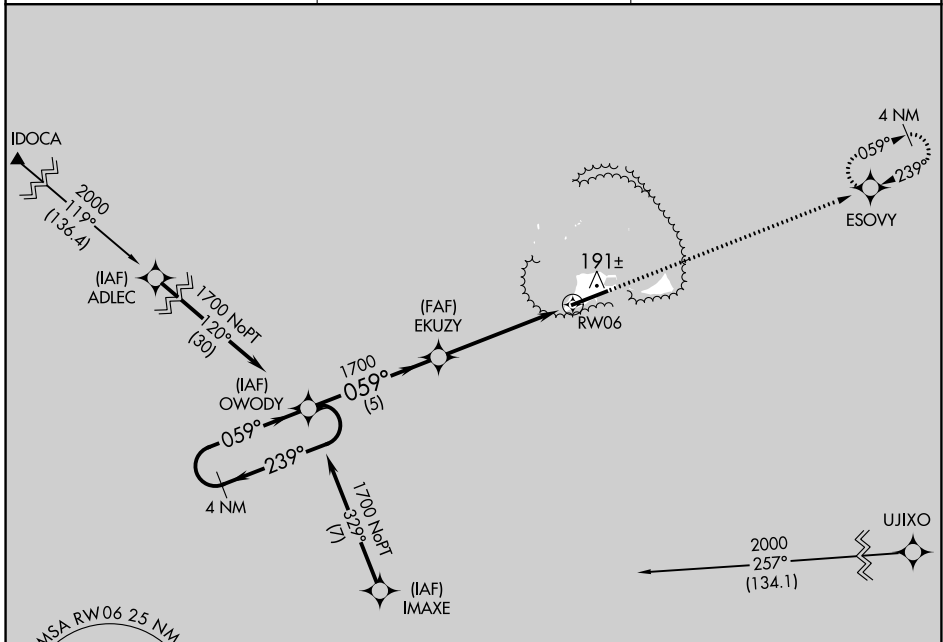
APP CRS	Rwy Idg	7800
059°	TDZE	18
	Apt Elev	18

RNAV (GPS) RWY 6

HENDERSON FIELD (MDY) (PMDY)

RNP APCH.	MISSED APPROACH: Climb to 1700 direct ESOVY WP and hold.
⚠ No controlled airspace below 5500. When local altimeter setting not received procedure NA. Rwy 6 helicopter visibility reduction below 3/4 SM NA.	

AWOS-3P 118.325	MIDWAY RADIO 126.2 257.8	CTAF 122.9
---------------------------	------------------------------------	----------------------



PAC, 10 SEP 2020 to 05 NOV 2020

PAC, 10 SEP 2020 to 05 NOV 2020

