

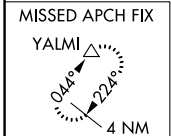
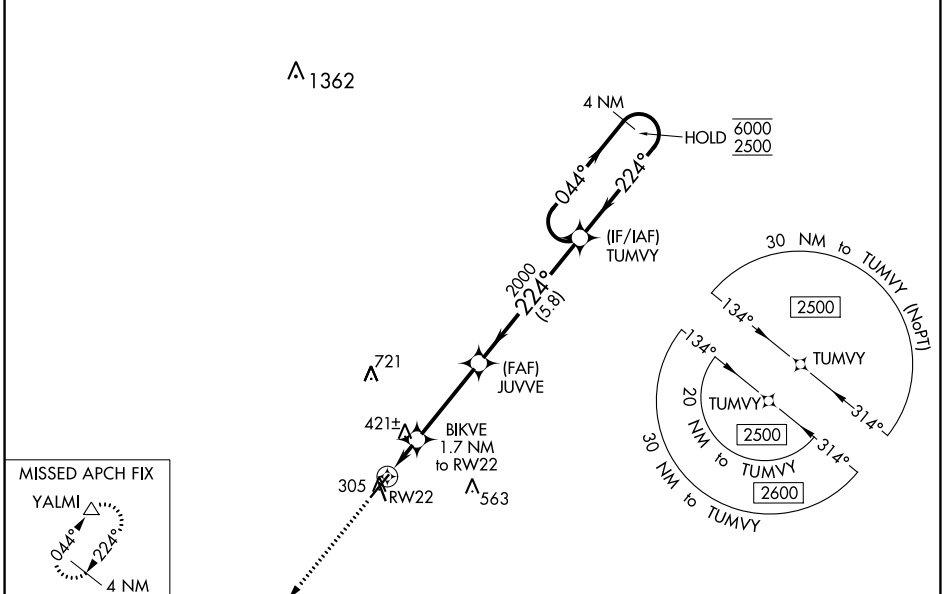
WAAS CH 93803 W22A	APP CRS 224°	Rwy Idg TDZE Apt Elev	5629 297 298
--	------------------------	-----------------------------	---

RNAV (GPS) RWY 22

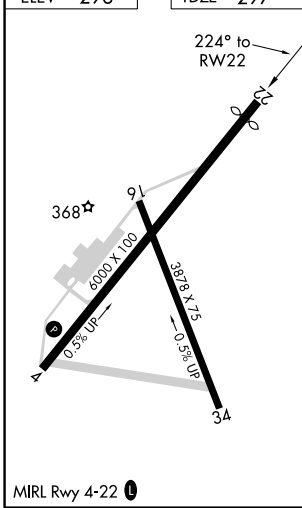
MOULTRIE MUNI (MGR)

RNP APCH.	MISSED APPROACH: Climb to 2500 direct YALMI and hold.
-----------	---

AWOS-3PT 118.925	VALDOSTA APP CON ★ 126.6 285.6	UNICOM 122.8 (CTAF) 0
----------------------------	--	--



ELEV 298	TDZE 297
----------	----------



2500	YALMI	4 NM Holding Pattern		
↑	△			
* LNAV only.	BIKVE 1.7 NM to RWY 22	JUVVE 2000		
	* 1.1 NM to RWY 22	TUMVY 224°		
		044° → 6000		
		← 224° 2500		
		GP 3.00° TCH 45		
	1.1 NM	0.6 NM	3.5 NM	5.8 NM
CATEGORY	A	B	C	D
LPV DA		601-1	304 (400-1)	
LNAV/VNAV DA		569-1	272 (300-1)	
LNAV MDA	680-1	383 (400-1)	680-1½	383 (400-1½)
<input checked="" type="checkbox"/> CIRCLING	720-1 422 (500-1)	760-1 462 (500-1)	860-1½ 562 (600-1½)	1080-2½ 782 (800-2½)

SE-4, 10 SEP 2020 to 08 OCT 2020

SE-4, 10 SEP 2020 to 08 OCT 2020