

WAAS CH 65629 W15A	APP CRS 152°	Rwy Idg 6500 TDZE 12 Apt Elev 15
--	------------------------	---

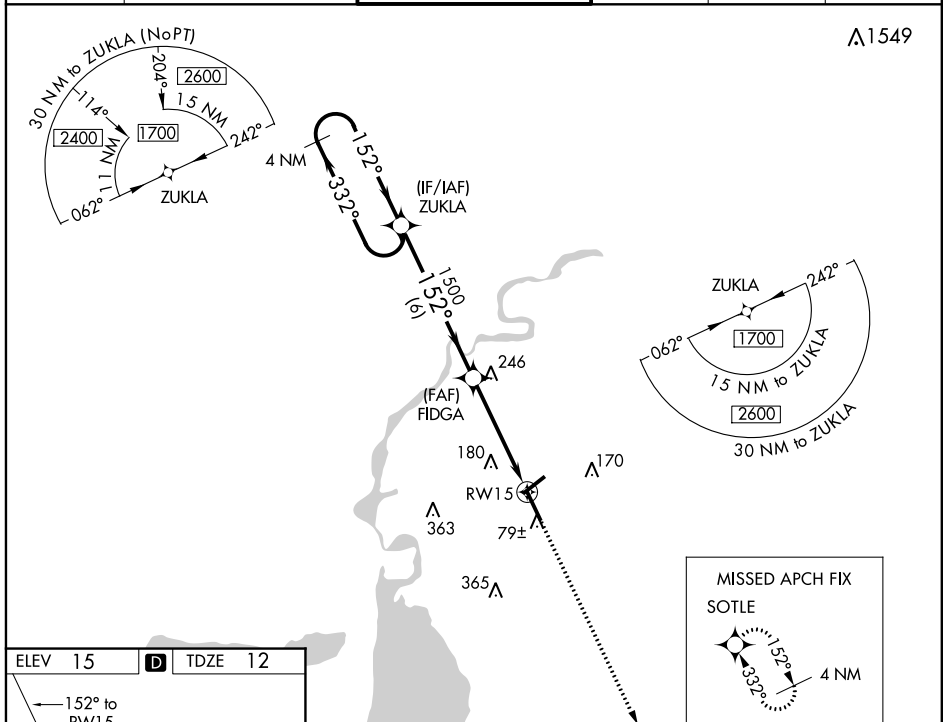
RNAV (GPS) RWY 15

LAKE CHARLES RGNL (LCH)

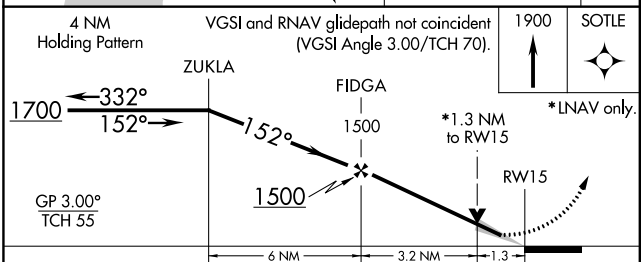
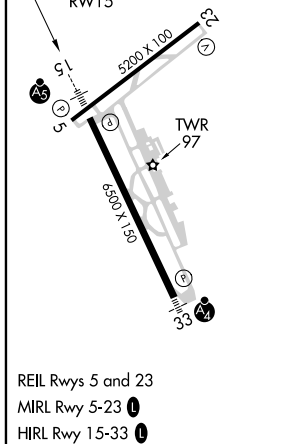
ASR When VGSI inop, Circling Rwy 5 NA at night. For uncompensated Baro-VNAV systems, LNAV/VNAV below -3°C (27°F) or above 43°C (109°F). DME/DME RNP-0.3 NA. For inop MALSR, increase LNAV-VNAV all Cats visibility to ¾ and LNAV Cats C and D to 1½ mile. **RVR 1800 authorized with use of FD or AP or HUD to DA.

MALSR MISSED APPROACH: Climb to 1900 direct SOTLE and hold.

ATIS 118.75	LAKE CHARLES APP CON * 119.35 353.75	LAKE CHARLES TOWER * 120.7 (CTAF) 257.8	GND CON 121.8	CLNC DEL 126.25	UNICOM 122.95
-----------------------	--	--	-------------------------	---------------------------	-------------------------



ELEV 15	D	TDZE 12
---------	----------	---------



CATEGORY	A	B	C	D
LPV DA		212/24	200 (200-½)	
LNAV/VNAV DA		301/24	289 (300-½)	
LNAV MDA	500/24	488 (500-½)	500/50	488 (500-1)
CIRCLING	500-1	485 (500-1)	500-1½ 485 (500-1½)	580-2 565 (600-2)

SC-4, 10 SEP 2020 to 08 OCT 2020

SC-4, 10 SEP 2020 to 08 OCT 2020