

WAAS CH <b>56215</b> <b>W33A</b>	APP CRS <b>332°</b>	Rwy Idg TDZE Apt Elev	<b>6500</b> <b>11</b> <b>15</b>
--	------------------------	-----------------------------	---------------------------------------

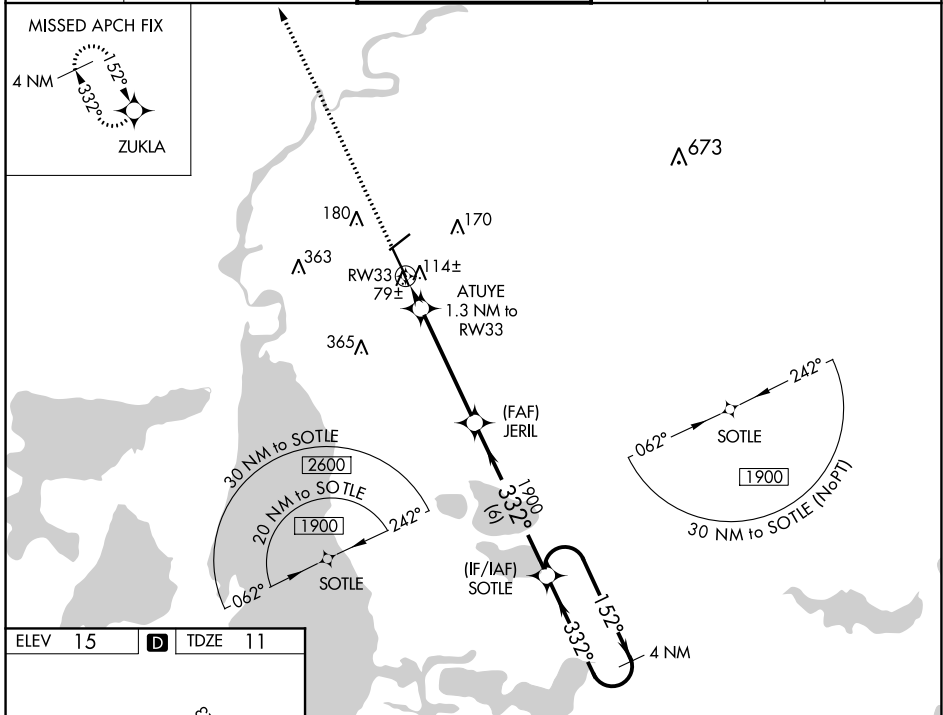
# RNAV (GPS) RWY 33

LAKE CHARLES RGNL (LCH)

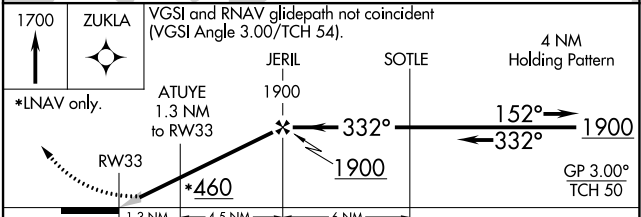
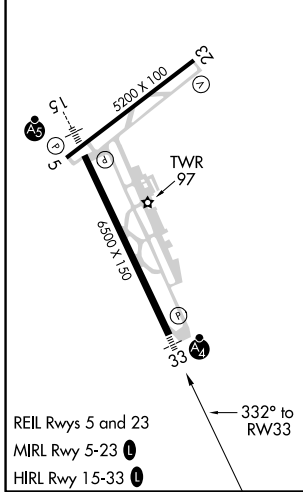
**ASR** When VGSI inop, Circling Rwy 5 NA at night. For uncompensated Baro-VNAV systems, LNAV/VNAV NA below -3°C (27°F) or above 43°C (109°F). DME/DME RNP-0.3 NA. For inop MALSF, increase LNAV/VNAV all Cats visibility to ¾ and LNAV all Cats visibility to 1 mile.

**MALSF** MISSED APPROACH: Climb to 1700 direct ZUKLA and hold.

ATIS <b>118.75</b>	LAKE CHARLES APP CON* <b>119.35 353.75</b>	LAKE CHARLES TOWER* <b>120.7 (CTAF) 257.8</b>	GND CON <b>121.8</b>	CLNC DEL <b>126.25</b>	UNICOM <b>122.95</b>
-----------------------	---	--	-------------------------	---------------------------	-------------------------



ELEV 15	<b>D</b>	TDZE 11
---------	----------	---------



CATEGORY	A	B	C	D
LPV DA		211-¾	200 (200-¾)	
LNAV/VNAV DA		296-¾	285 (300-¾)	
LNAV MDA		380-¾	369 (400-¾)	
CIRCLING	440-1 425 (500-1)	480-1 465 (500-1)	480-1½ 465 (500-1½)	580-2 565 (600-2)

SC-4, 10 SEP 2020 to 08 OCT 2020

SC-4, 10 SEP 2020 to 08 OCT 2020