

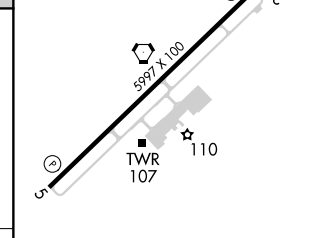
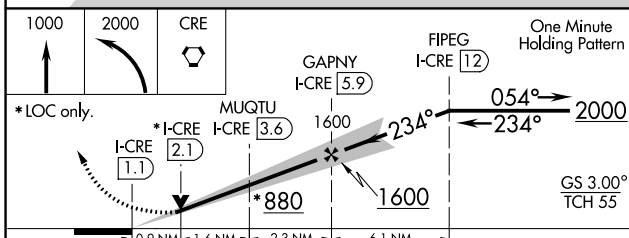
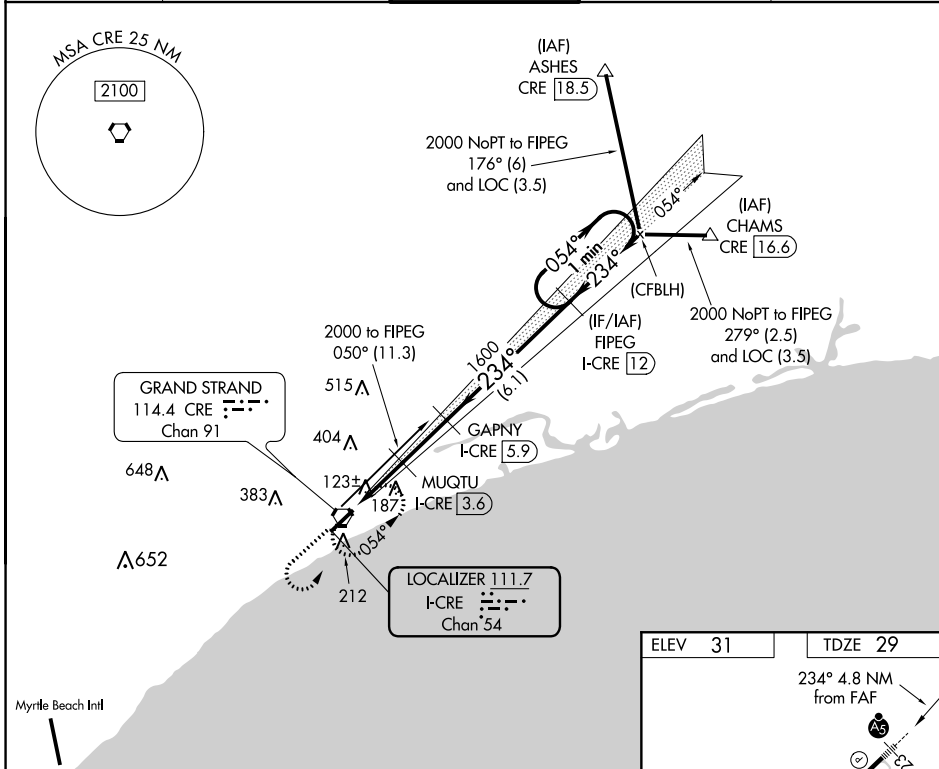
LOC/DME I-CRE <b>111.7</b> Chan <b>54</b>	APP CRS <b>234°</b>	Rwy Idg TDZE Apt Elev	<b>5997</b> <b>29</b> <b>31</b>
---	------------------------	-----------------------------	---------------------------------------

# ILS or LOC RWY 23

## GRAND STRAND (CRE)

<p><b>⚠</b> When local altimeter setting not received use Myrtle Beach Intl altimeter setting and increase all DA 31 feet and all MDA 40 feet. For inoperative MALSR, increase S-LOC 23 Cat C and D visibility to 1. VDP NA with Myrtle Beach Intl altimeter setting. DME required.</p>		<p>MISSED APPROACH: Climb to 1000 then climbing left turn to 2000 direct CRE VORTAC and hold, continue climb-in-hold to 2000.</p>

ATIS <b>119.625</b>	MYRTLE BEACH APP CON ★ <b>119.2 350.3</b>	STRAND TOWER ★ <b>124.6 (CTAF) 257.6</b>	GND CON <b>121.8 257.6</b>	UNICOM <b>122.95</b>
------------------------	--	---	-------------------------------	-------------------------



CATEGORY	A	B	C	D
S-ILS 23	229-½		200 (200-½)	
S-LOC 23	380-½ 351 (400-½)		380-⅝ 351 (400-⅝)	
CIRCLING	520-1 489 (500-1)		520-1½ 720-2¼ 489 (500-1½) 689 (700-2¼)	

ELEV 31	TDZE 29
---------	---------

SE-2, 10 SEP 2020 to 08 OCT 2020

SE-2, 10 SEP 2020 to 08 OCT 2020