

VORTAC CRE 114.4 Chan 91	APP CRS 238°	Rwy Idg 5997 TDZE 29 Apt Elev 31
--	------------------------	---

VOR RWY 23

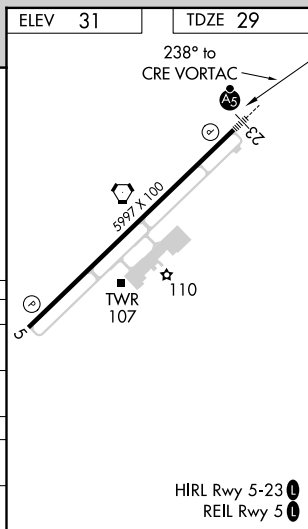
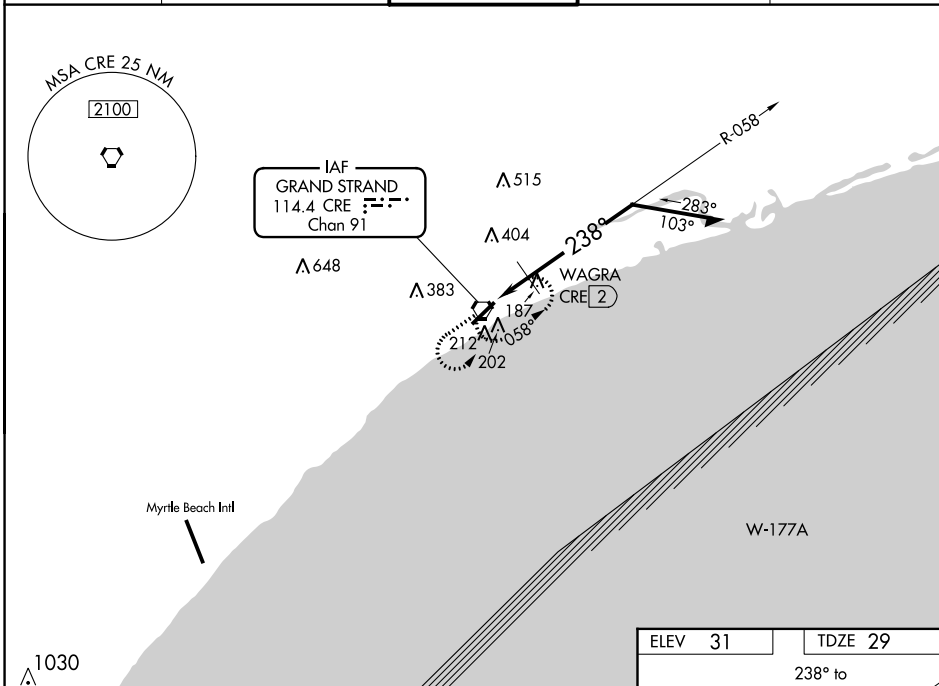
GRAND STRAND (CRE)

⚠ For inoperative MALSR, increase S-23 and S-23 DME minimums Cats A and B visibility to 1 mile. Visibility reduction by helicopters NA. When local altimeter setting not received use Myrtle Beach Intl altimeter setting and increase all MDA 40 feet. For inoperative MALSR when using Myrtle Beach Intl altimeter setting, increase S-23 and S-23 DME minimums Cats A and B visibility to 1 mile.



MISSED APPROACH: Climb to 2000 then left turn direct CRE VORTAC and hold.

ATIS 119.625	MYRTLE BEACH APP CON * 119.2 350.3	STRAND TOWER * 124.6 (CTAF) 257.6	GND CON 121.8 257.6	UNICOM 122.95
------------------------	--	---	-------------------------------	-------------------------



2000	CRE	CRE VORTAC	Remain within 10 NM
*600 when using Myrtle Beach Intl altimeter setting.		WAGRA CRE 2	1700
		560	
		0.4 1.6 NM	

CATEGORY	A	B	C	D
S-23	560-3/4	531 (600-3/4)	560-1 531 (600-1)	560-1 1/4 531 (600-1 1/4)
CIRCLING	560-1	529 (600-1)	560-1 1/2 529 (600-1 1/2)	720-2 1/4 689 (700-2 1/4)
WAGRA FIX MINIMUMS				
S-23	460-3/4	431 (500-3/4)		460-1 431 (500-1)
CIRCLING	520-1	489 (500-1)	520-1 1/2 489 (500-1 1/2)	720-2 1/4 689 (700-2 1/4)

SE-2, 10 SEP 2020 to 08 OCT 2020

SE-2, 10 SEP 2020 to 08 OCT 2020