

WAAS CH <b>69204</b> <b>W33A</b>	APP CRS <b>336°</b>	Rwy Idg <b>5950</b> TDZE <b>4316</b> Apt Elev <b>4316</b>
--	------------------------	---

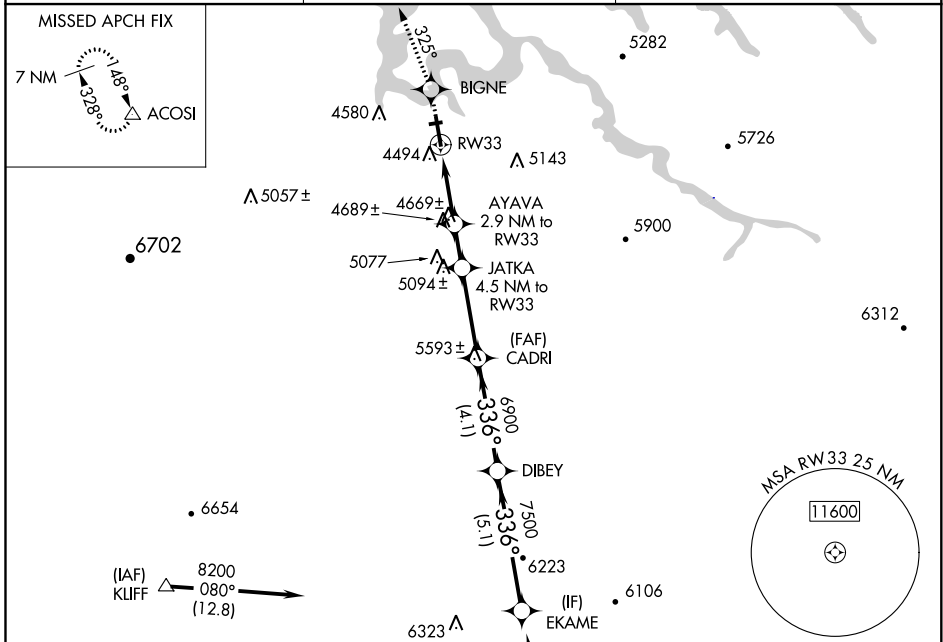
# RNAV (GPS) RWY 33

PAGE MUNI (PGA)

**▽** For uncompensated Baro-VNAV systems, LNAV/VNAV NA below -23°C (-9°F) or above 41°C (105°F).  
DME/DME RNP-0.3 NA. Circling NA to Rwy 7-25.

MISSED APPROACH: Climb to 8500 direct BIGNE and via 325° track to ACOSI and hold, continue climb-in-hold to 8500.

ASOS <b>120.625</b>	DENVER CENTER <b>127.55 256.875</b>	UNICOM <b>122.8 (CTAF)</b> <b>0</b>
------------------------	--	--

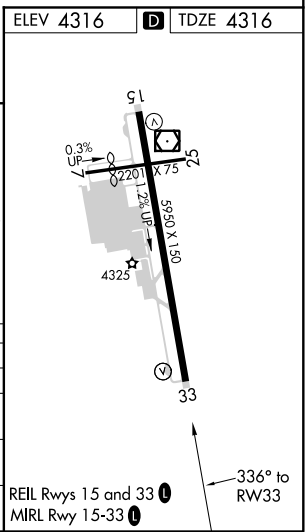


Procedure NA for arrivals at CELAY via V208 southbound.

ELEV 4316 **D** TDZE 4316

8500	BIGNE	ACOSI	VGSI and RNAV glidepath not coincident (VGSI Angle 3.00/TCH 30).		EKAME
↑	325° tr	△	JATKA	CADRI	DIBEY
*LNAV only.		AYAVA	RW33		8200
*1.8 NM to RW33		2.9 NM to RW33	4.5 NM to RW33		7500
RW33		RW33			6900
1.8 NM		1.1 NM	1.6 NM	3.3 NM	4.1 NM
5280		5800	6900	7500	8200
CATEGORY	A	B	C	D	
LPV DA	4566-1		250 (300-1)		
LNAV/VNAV DA	4744-1½		428 (500-1½)		
LNAV MDA	4920-1	604 (700-1)	4920-1¾	604 (700-1¾)	4920-2
CIRCLING	4920-1	604 (700-1)	4920-1¾	604 (700-1¾)	4920-2

Procedure Turn NA  
GP 3.00°  
TCH 50



SW-4, 10 SEP 2020 to 08 OCT 2020

SW-4, 10 SEP 2020 to 08 OCT 2020