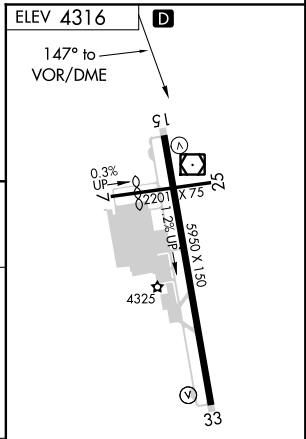
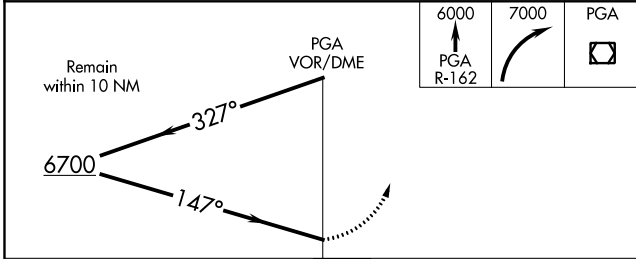
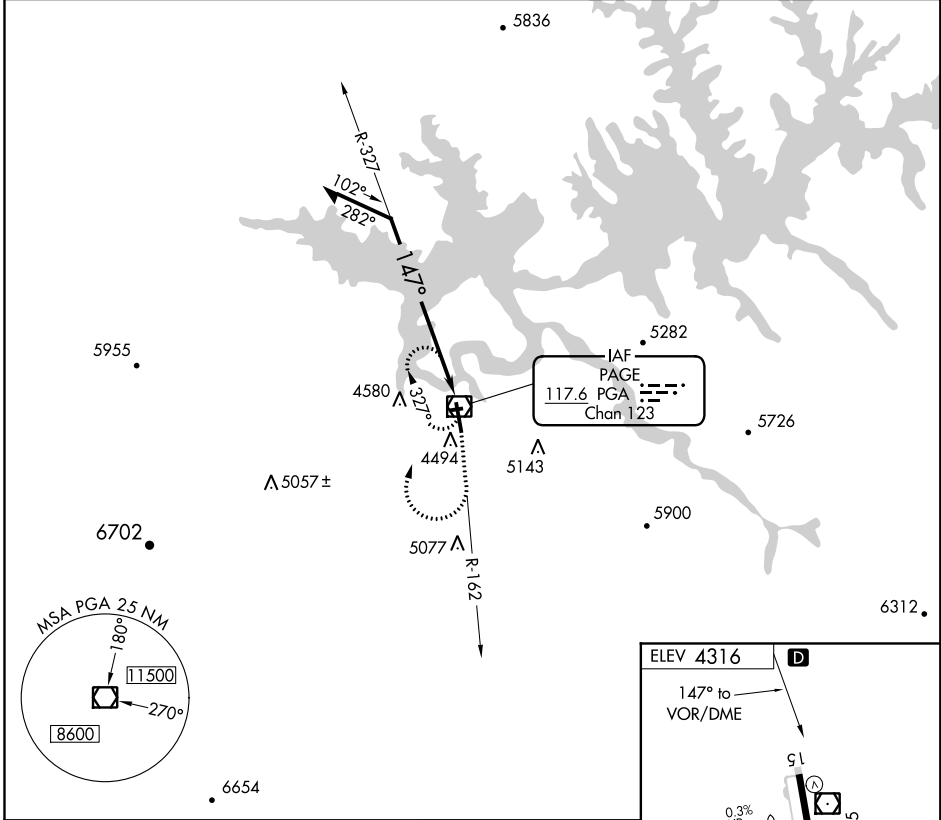


VOR/DME PGA 117.6 Chan 123	APP CRS 147°	Rwy Idg TDZE Apt Elev N/A N/A 4316
---	------------------------	--

VOR-B
PAGE MUNI (PGA)

NA Circling NA to Rwy 7-25.	MISSED APPROACH: Climb on the PGA R-162 to 6000, then climbing right turn to 7000 direct PGA VOR/DME and hold.
---------------------------------------	--

ASOS 120.625	DENVER CENTER 127.55 256.875	UNICOM 122.8 (CTAF)
------------------------	--	-------------------------------



CATEGORY	A	B	C	D
CIRCLING	5200-1¼	884 (900-1¼)	5200-2¾ 884 (900-2¾)	5200-3 884 (900-3)

REIL Rwy 15 and 33
MIRL Rwy 15-33

SW-4, 10 SEP 2020 to 08 OCT 2020

SW-4, 10 SEP 2020 to 08 OCT 2020