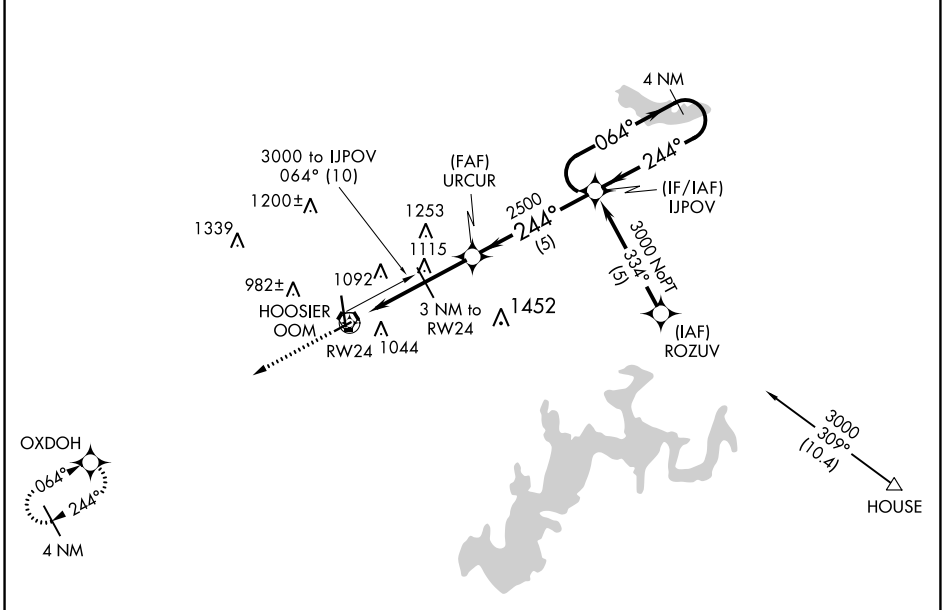


APP CRS <b>244°</b>	Rwy Idg <b>3576</b>
	TDZE <b>841</b>
	Aprt Elev <b>846</b>

# RNAV (GPS) RWY 24

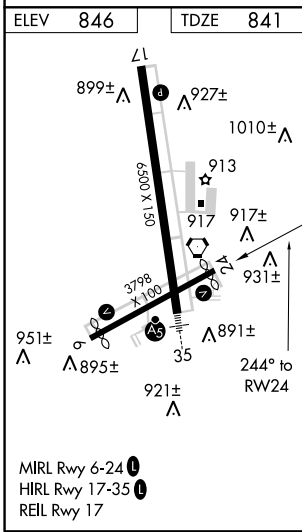
MONROE COUNTY (BMG)

RNP APCH.		MISSED APPROACH: Climb to 3000 direct OXDOH WP and hold.				
<p>▼ Rwy 24 helicopter visibility reduction below 1 SM NA. Procedure NA at night.</p> <p>▲ When local altimeter setting not received use Terre Haute Rgnl altimeter setting and increase all MDA 140 feet; increase LNAV Cat C/D ¼ mile.</p>		ASOS <b>110.2</b>	HULMAN APP CON <b>128.025 339.8</b>	BLOOMINGTON TOWER * <b>120.775 (CTAF) 0</b>	GND CON <b>121.9</b>	UNICOM <b>122.95</b>



EC-2, 10 SEP 2020 to 08 OCT 2020

EC-2, 10 SEP 2020 to 08 OCT 2020



ELEV	846	TDZE	841
3000		4 NM Holding Pattern	
		VGSI and descent angle not coincident (VGSI Angle 4.00/TCH 49).	
3 NM to RWY 24		3000	
1840 ≤ 3.06° TCH 31		2500	
3 NM		2 NM	
3 NM		5 NM	
CATEGORY	A	B	D
LNAV MDA	1320-1	479 (500-1)	1320-1½ 479 (500-1½)

