

KAOLN SIX DEPARTURE (RNAV)

AIKEN RGNL (AIK)
AIKEN, SOUTH CAROLINA

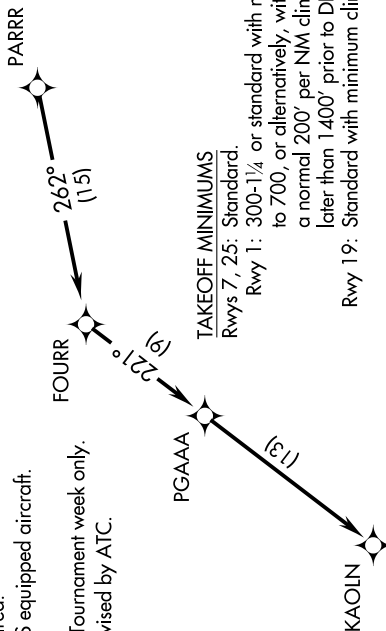
SE-2, 10 SEP 2020 to 08 OCT 2020

CTAF
122.8
AUGUSTA DEP CON ★
119.15 284.625
CLINC DEL
126.075

- NOTE: DME/DME/IRU or GPS required.
- NOTE: RADAR required for non-GPS equipped aircraft.
- NOTE: RNAV 1.
- NOTE: For use during Masters Golf Tournament week only.
- NOTE: Do not exceed 250K until advised by ATC.



**TOP ALTITUDE:
ASSIGNED BY ATC**



TAKEOFF MINIMUMS
Rwys 7, 25: Standard.

Rwy 1: 300-1¼ or standard with minimum climb of 216' per NM to 700, or alternatively, with standard takeoff minimums and a normal 200' per NM climb gradient; takeoff must occur no later than 1400' prior to DER.

Rwy 19: Standard with minimum climb of 201' per NM to 1000.

NOTE: Chart not to scale.

DEPARTURE ROUTE DESCRIPTION

TAKEOFF RWYS 1, 7, 19, 25: Climb on assigned heading for RADAR vectors to PARRR, then on depicted route to KAOLN. Thence. . . .

. . . . maintain altitude assigned by ATC. Expect clearance to filed altitude/flight level within 10 minutes after departure.

SE-2, 10 SEP 2020 to 08 OCT 2020