

VORTAC IRQ <b>113.9</b> Chan <b>86</b>	APP CRS <b>102°</b>	Rwy Idg TDZE Apt Elev	<b>N/A</b> <b>N/A</b> <b>528</b>
--	------------------------	-----------------------------	--

# VOR/DME-A

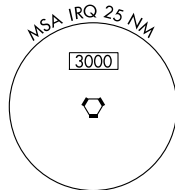
AIKEN RGNL (AIK)

**▼** When local altimeter setting not received, use Augusta Rgnl at Bush Field altimeter setting and increase all MDA 120 feet and increase Cat D visibility ¼ mile.

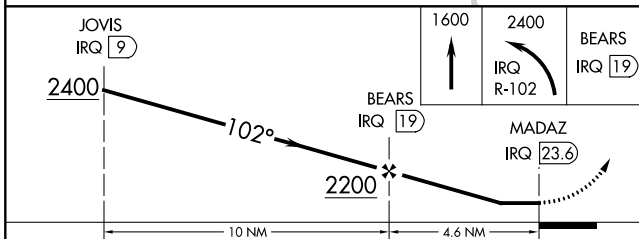
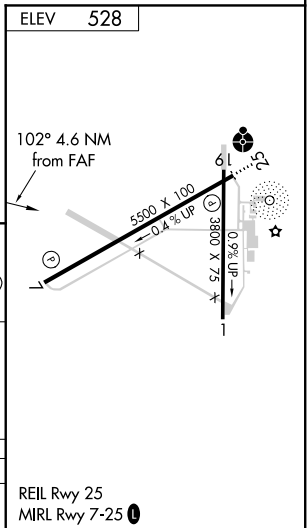
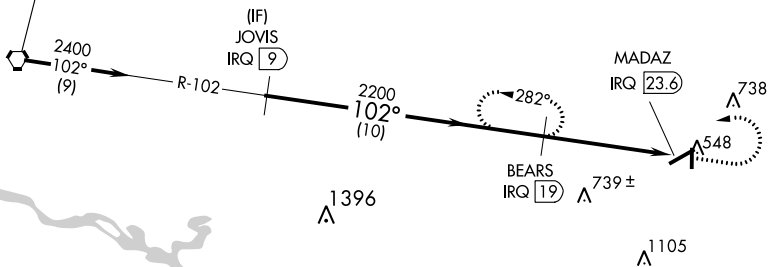
**▲ NA** MISSED APPROACH: Climb to 1600 then climbing left turn to 2400 on IRQ VORTAC R-102 to BEARS/IRQ 19 DME and hold.

AWOS-3 <b>118.025</b>	AUGUSTA APP CON * <b>119.15 284.625</b>	CLNC DEL <b>126.075</b>	UNICOM <b>122.8</b> (CTAF) <b>📻</b>
--------------------------	--	----------------------------	--

Procedure NA for arrivals at IRQ VORTAC on airway radials 062 CW 154.



IAF  
COLLIERS  
113.9 IRQ  
Chan 86



CATEGORY	A	B	C	D
CIRCLING	980-1 452 (500-1)	1000-1¼ 472 (500-1¼)	1000-1½ 472 (500-1½)	1080-2 552 (600-2)

REIL Rwy 25  
MRL Rwy 7-25 **📻**

SE-2, 10 SEP 2020 to 08 OCT 2020

SE-2, 10 SEP 2020 to 08 OCT 2020