


WAAS CH 50521 W31A	APP CRS 313°	Rwy Idg TDZE Apt Elev	6095 1285 1306
--	------------------------	-----------------------------	---

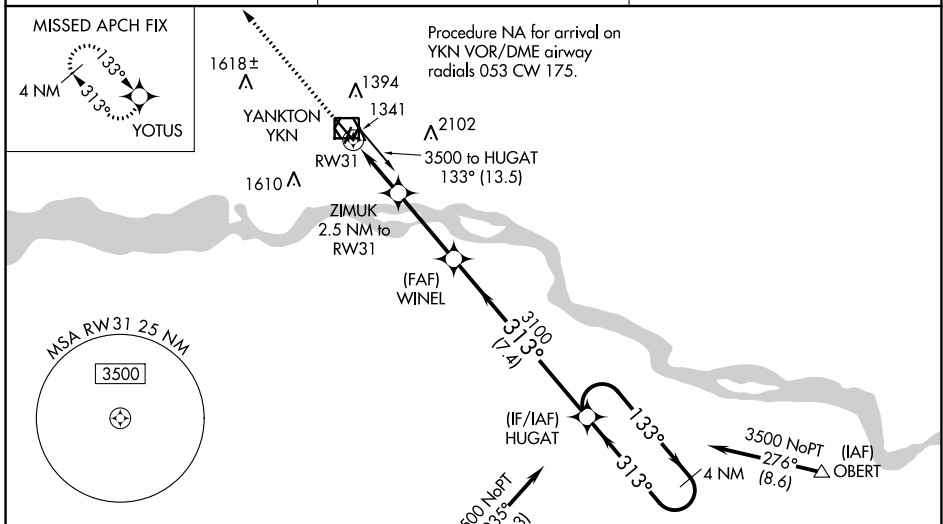
RNAV (GPS) RWY 31

CHAN GURNEY MUNI (YKN)

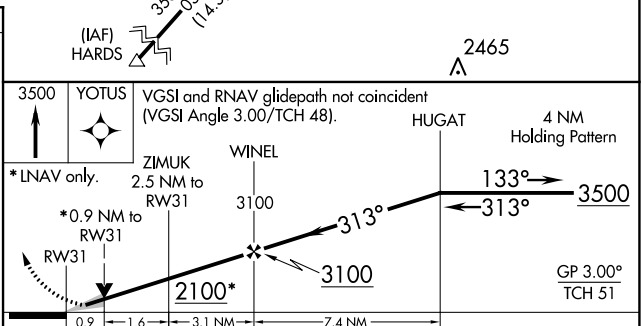
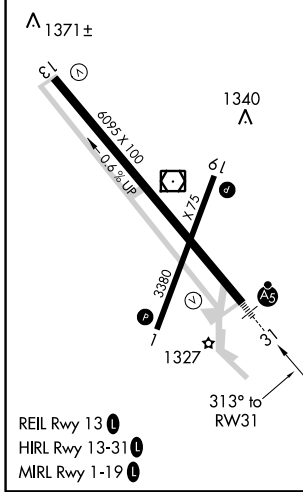
⚠ When VGSI inoperative, Circling Rwy 19 NA at night. Baro-VNAV NA when using Sioux Falls altimeter setting. For uncompensated Baro-VNAV systems, LNAV/VNAV NA below -17°C (2°F) or above 35°C (95°F). DME/DME RNP-0.3 NA. VDP NA with Sioux Falls altimeter setting. When local altimeter setting not received, use Sioux Falls altimeter setting and increase all DA 130 feet and all MDA 140 feet. Increase LPV all Cats visibility 1/8 mile, LNAV/VNAV all Cats visibility 1/4 mile, LNAV Cats C and D visibility 1/2 mile and Circling Cats C and D visibility 1/4 mile. For inoperative MALSR when using Sioux Falls altimeter setting increase LPV visibility to 1 1/8 all Cats, LNAV/VNAV visibility to 1 1/4 all Cats, LNAV Cats C and D to 1 1/8 and increase Circling Cats C and D 1/4 mile.

MALSRS

MISSED APPROACH:
 Climb to 3500 direct YOTUS and hold, continue climb-in-hold to 3500.

AWOS-3PT 119.05	MINNEAPOLIS CENTER 125.025 235.625	UNICOM 122.8 (CTAF) 0
---------------------------	--	---------------------------------



ELEV 1306	TDZE 1285
-----------	-----------



CATEGORY	A	B	C	D
LPV DA		1485-1/2	200 (200-1/2)	
LNAV/VNAV DA		1535-1/2	250 (300-1/2)	
LNAV MDA		1600-1/2	315 (300-1/2)	
CIRCLING	1780-1	474 (500-1)	1780-1 1/2 474 (500-1 1/2)	1860-2 554 (600-2)

NC-1, 10 SEP 2020 to 08 OCT 2020

NC-1, 10 SEP 2020 to 08 OCT 2020