

LOC/DME I-ETI 110.7	APP CRS 091°	Rwy ldg 5350 TDZE 19 Apt Elev 19
Chan 44		

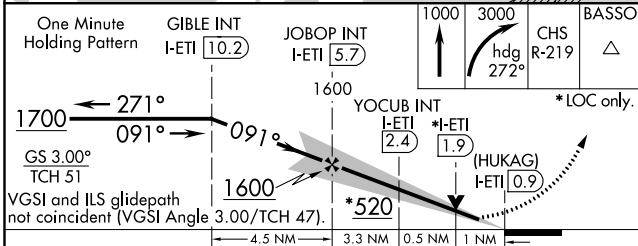
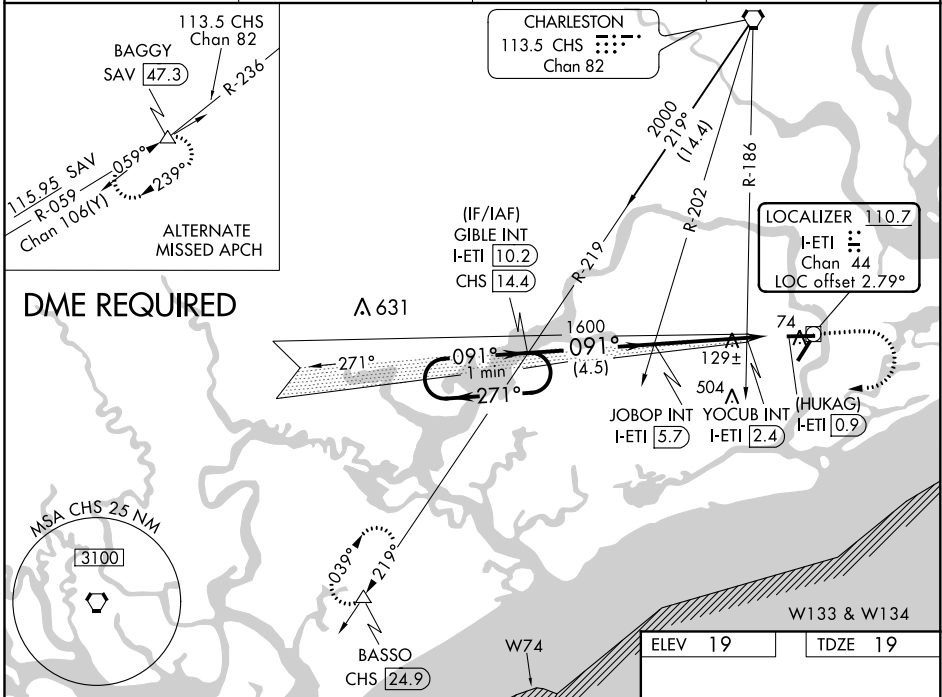
ILS or LOC RWY 9

CHARLESTON EXECUTIVE (JZI)

▼ DME required. Helicopter visibility reduction below 3/4 SM NA. When local altimeter setting not received, use Charleston AFB/Intl altimeter setting and increase DA 32 feet and all MDAs 40 feet, increase S-ILS all Cats visibility 1/8 mile and S-LOC Cat C and D visibility 1/4 mile and S-LOC YOCUB Fix Minimum Cat C and D visibility 1/8 mile. VDP NA when using Charleston AFB/Intl altimeter setting.

MISSED APPROACH: Climb to 1000 then climbing right turn to 3000 on heading 272° and on CHS VORTAC R-219 to BASSO/CHS 24.9 DME and hold.

AWOS-3 123.775	CHARLESTON APP CON 120.7 306.925	CLNC DEL 119.85	UNICOM 122.8 (CTAF)
--------------------------	--	---------------------------	-------------------------------



ELEV 19	TDZE 19
One Minute Holding Pattern GIBBLE INT I-ETI 10.2 JOBOP INT I-ETI 5.7 YOCUB INT I-ETI 2.4 HUKAG INT I-ETI 0.9 *LOC only.	
1700 ← 271° GS 3.00° TCH 51 VGSIs and ILS glidepath not coincident (VGSIs Angle 3.00/TCH 47). 1600 ← 091° 1600 ← 091° 5350 X 100 4313 X 130	
MIRL Rwy 4-22 HIRL Rwy 9-27	
FAF to MAP 4.8 NM	
Knots: 60 90 120 150 180 Min:Seq: 4:48 3:12 2:24 1:55 1:36	

CATEGORY	A	B	C	D
S-ILS 9	275-3/4 256 (300-3/4)			
S-LOC 9	520-1	501 (600-1)	520-1 3/8	501 (600-1 3/8)
CIRCLING	520-1	501 (600-1)	501 (600-1 1/2)	561 (600-2)
YOCUB FIX MINIMUMS (DUAL VOR RECEIVERS or DME REQUIRED)				
S-LOC 9	380-1	361 (400-1)	380-1 1/8	361 (400-1 1/8)
CIRCLING	440-1	480-1	480-1 1/2	580-2
	421 (500-1)	461 (500-1)	461 (500-1 1/2)	561 (600-2)

SE-2, 10 SEP 2020 to 08 OCT 2020

SE-2, 10 SEP 2020 to 08 OCT 2020