

WAAS CH 53305 W09A	APP CRS 094°	Rwy ldg TDZE Apt Elev	5350 19 19
--	------------------------	-----------------------------	---------------------------------------

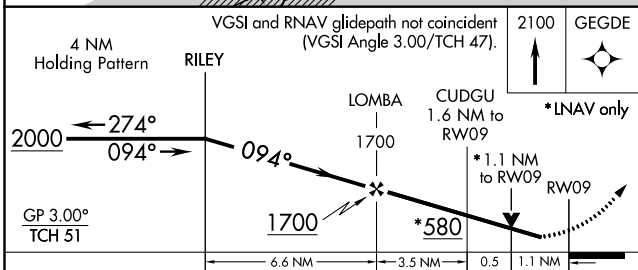
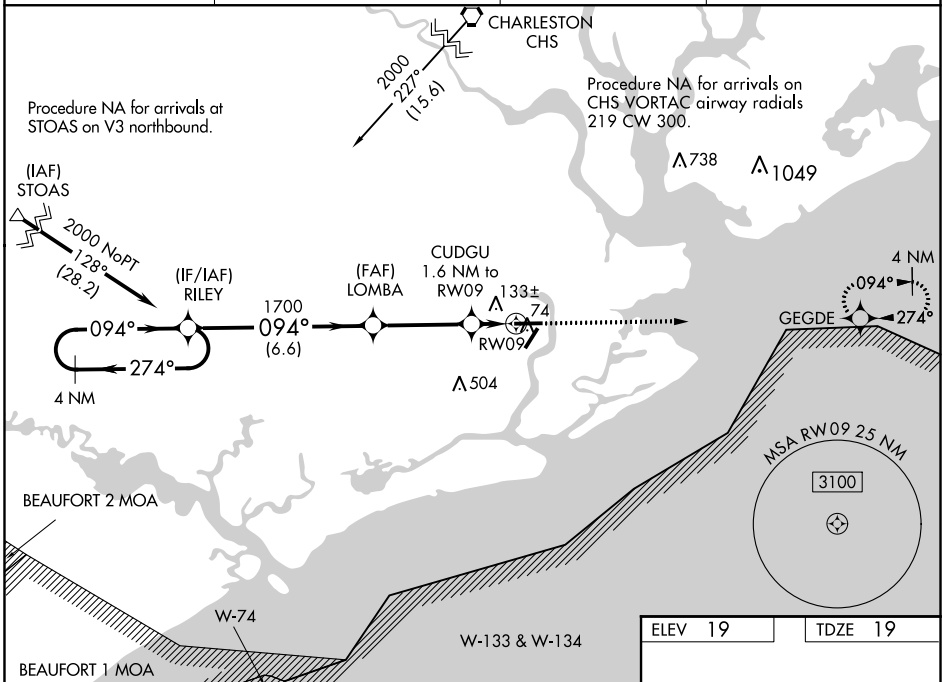
RNAV (GPS) RWY 9

CHARLESTON EXECUTIVE (JZI)

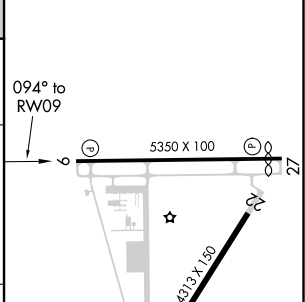
▼ For uncompensated Baro-VNAV systems, LNAV/VNAV NA below -15°C (5°F) or above 43°C (109°F). DME/DME RNP-0.3 NA. Visibility reduction by helicopters NA. Baro-VNAV and ▲ VDP NA when using Charleston AFB/Intl altimeter setting. When local altimeter setting not received, use Charleston AFB/Intl altimeter setting and increase all DA 32 feet and all MDA 40 feet; increase LNAV Cat C and D visibility 1/2 mile.

MISSED APPROACH:
Climb to 2100 direct GEGDE and hold.

AWOS-3 123.775	CHARLESTON APP CON 120.7 306.925	CLNC DEL 119.85	UNICOM 122.8 (CTAF) 0
--------------------------	--	---------------------------	--



ELEV 19	TDZE 19
---------	---------



CATEGORY	A	B	C	D
LPV DA		219-3/4	200 (200-3/4)	
LNAV/VNAV DA		314-1	295 (300-1)	
LNAV MDA	400-1	381 (400-1)	400-1 1/8	381 (400-1 1/8)
CIRCLING	440-1 421 (500-1)	480-1 461 (500-1)	480-1 1/2 461 (500-1 1/2)	580-2 561 (600-2)

MIRL Rwy 4-22 **0**
HIRL Rwy 9-27 **0**

SE-2, 10 SEP 2020 to 08 OCT 2020

SE-2, 10 SEP 2020 to 08 OCT 2020