

WAAS CH <b>86815</b> <b>W27A</b>	APP CRS <b>271°</b>	Rwy Idg TDZE Apt Elev	<b>5000</b> <b>529</b> <b>529</b>
--	------------------------	-----------------------------	---

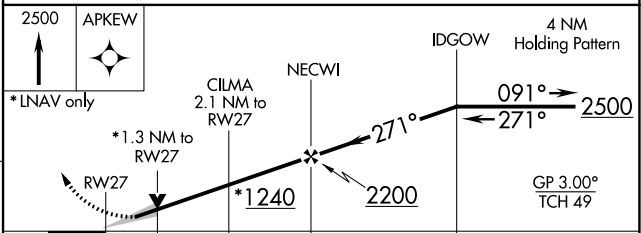
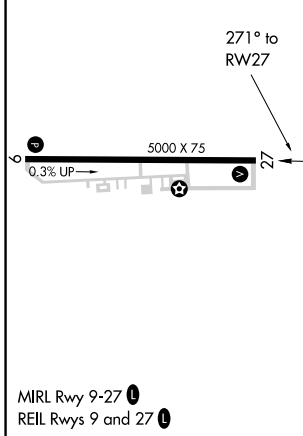
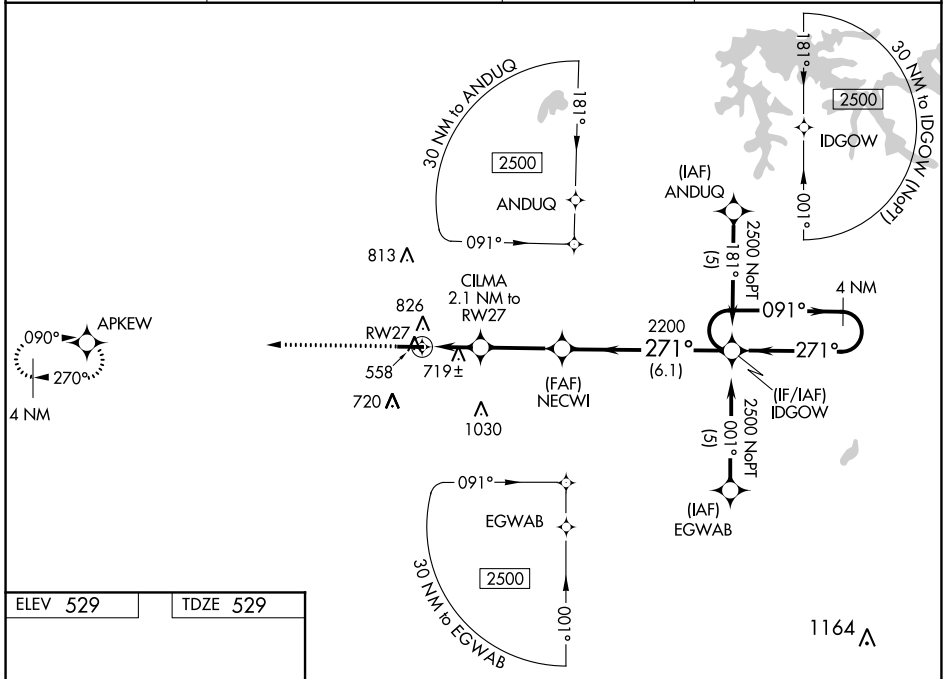
# RNAV (GPS) RWY 27

HUNTINGBURG (HNB)

**⚠** For uncompensated Baro-VNAV systems, LNAV/VNAV NA below -16°C (4°F) or above 47°C (116°F). DME/DME RNP-0.3 NA.  
**⚠** VDP and Baro-VNAV NA when using Evansville altimeter setting. When local altimeter setting not received, use Evansville altimeter setting and increase all DA 85 feet and all MDA 100 feet, increase LPV and LNAV/VNAV all Cats and LNAV Cats C and D visibility ¼ mile.

MISSED APPROACH: Climb to 2500 direct APKEW and hold.

AWOS-3PT <b>118.250</b>	EVANSVILLE APP CON ★ <b>124.025 290.9</b>	CLNC DEL <b>118.8</b>	UNICOM <b>122.8 (CTAF) 0</b>
----------------------------	--	--------------------------	---------------------------------



CATEGORY	A	B	C	D
LPV DA	812-1 283 (300-1)			
LNAV/VNAV DA	1038-1¼ 509 (600-1¼)			
LNAV MDA	980-1	451 (500-1)	980-1¼ 451 (500-1¼)	980-1½ 451 (500-1½)
CIRCLING	1000-1 471 (500-1)	1020-1 491 (500-1)	1020-1½ 491 (500-1½)	1080-2 551 (600-2)

EC-2, 10 SEP 2020 to 08 OCT 2020

EC-2, 10 SEP 2020 to 08 OCT 2020