

WAAS CH 70703 W27A	APP CRS 273°	Rwy Idg TDZE Apt Elev	5001 738 738
--	------------------------	-----------------------------	---

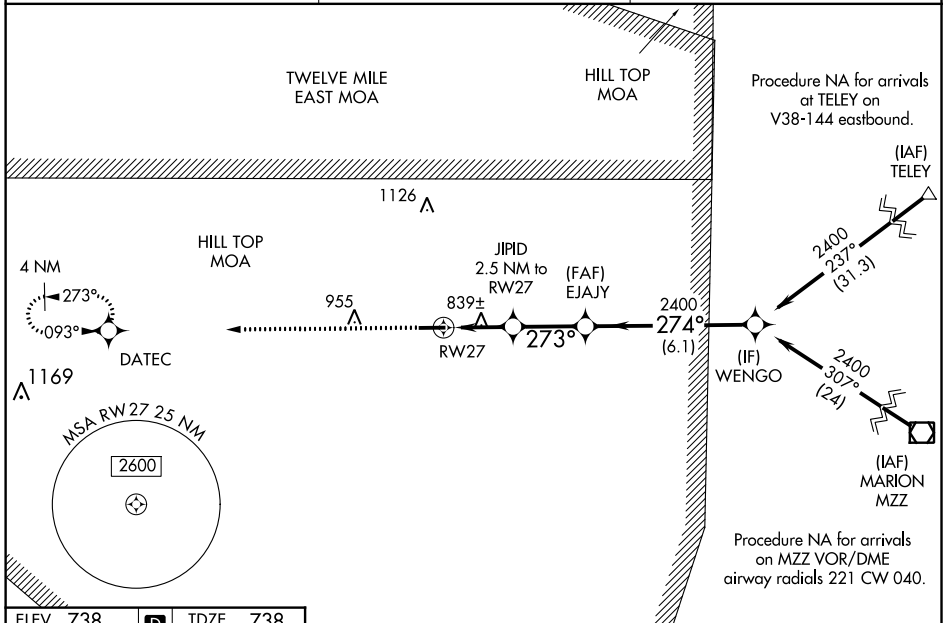
RNAV (GPS) RWY 27

LOGANSPORT/CASS COUNTY (GGP)

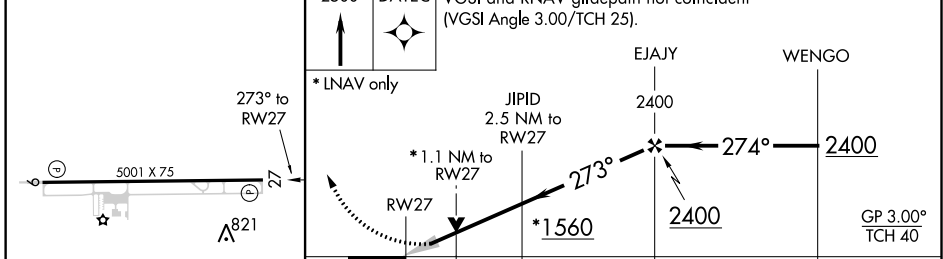
NA Baro-VNAV NA when using Grissom ARB altimeter setting. For uncompensated Baro-VNAV systems, LNAV/VNAV NA below -16°C (4°F) or above 39°C (102°F). DME/DME RNP-0.3 NA. VDP NA with Grissom ARB altimeter setting. Obtain local altimeter setting on CTAF; when not received, use Grissom ARB altimeter setting and increase all DA 36 feet, all MDA 40 feet and LNAV/VNAV all Cats visibility ¼ mile and LNAV Cat C/D visibility ½ mile.

MISSED APPROACH:
Climb to 2500 direct DATEC and hold.

AWOS-3P 118.5	GRISSOM APP CON★ 121.05 338.275	UNICOM 122.8 (CTAF) 0
-------------------------	---	---------------------------------



ELEV 738	D	TDZE 738
-----------------	----------	-----------------



CATEGORY	A	B	C	D
LPV DA		938-¾	200 (200-¾)	
LNAV/VNAV DA		1020-⅞	282 (300-⅞)	
LNAV MDA	1100-1 362 (400-1)			
CIRCLING	1160-1	1200-1	1200-1½	1300-2
	422 (500-1)	462 (500-1)	462 (500-1½)	562 (600-2)

EC-2, 10 SEP 2020 to 08 OCT 2020

EC-2, 10 SEP 2020 to 08 OCT 2020