

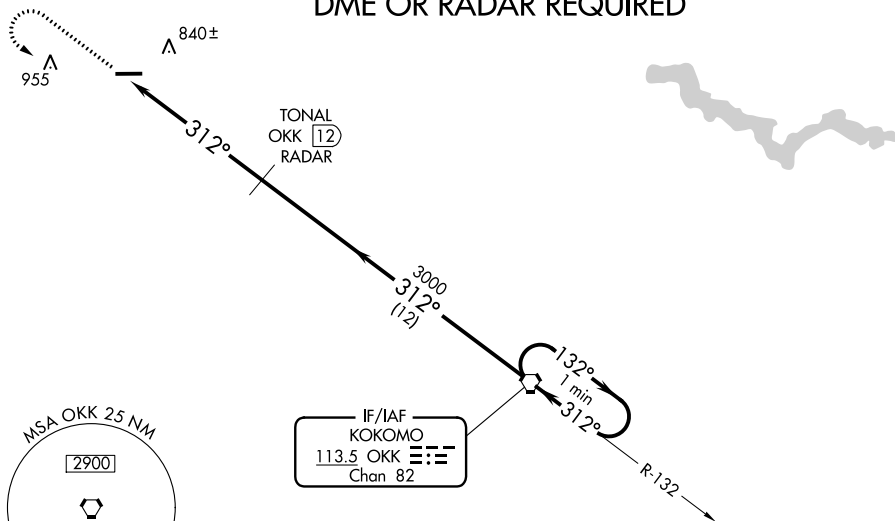
VORTAC OKK 113.5 Chan 82	APP CRS 312°	Rwy Idg TDZE Apt Elev N/A N/A 738
--	------------------------	---

VOR-A
LOGANSPO/CASS COUNTY (GGP)

⚠ When local altimeter setting not received, use Grissom ARB altimeter setting. MISSED APPROACH: Climb to 3000, then left turn on OKK VORTAC R-312 to OKK VORTAC and hold.

AWOS-3P 118.5	GRISSOM APP CON ★ 121.05 338.275	UNICOM 122.8 (CTAF) 0
-------------------------	--	--

DME OR RADAR REQUIRED



NoPT for arrival on OKK VORTAC airway radials 060 CW 204.

ELEV 738 **D**

MIRA Rwy 9-27 **0**
REIL Rwys 9 and 27 **0**
FAF to MAP 5.9 NM

Knots	60	90	120	150	180
Min:Sec	5:54	3:56	2:57	2:22	1:58

1649 **A**

CATEGORY	A	B	C	D
CIRCLING	1200-1	462 (500-1)	1200-1½ 462 (500-1½)	1300-2 562 (600-2)
GRISSOM ARB ALTIMETER SETTING MINIMUMS				
CIRCLING	1240-1	502 (600-1)	1240-1½ 502 (600-1½)	1340-2 602 (700-2)

EC-2, 10 SEP 2020 to 08 OCT 2020

EC-2, 10 SEP 2020 to 08 OCT 2020