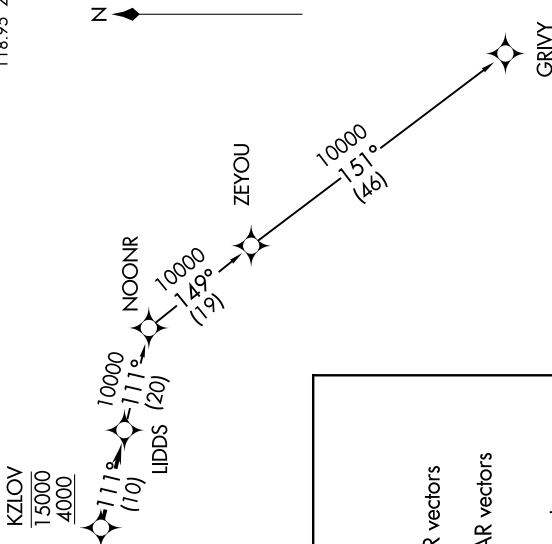


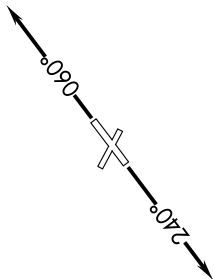
**TOP ALTITUDE:
ASSIGNED BY ATC**

TAKEOFF MINIMUMS:
Rwys 6, 24: Standard.
Rwys 12, 30: NA-Environmental.

ATS
134.55
CLNC DEL
121.6
GND CON
121.6
ANN ARBOR TOWER *
120.3 (CTAF)
DETROIT DEP CON
118.95 284.0



NOTE: RNAV 1.
NOTE: RADAR required.
NOTE: DME/DME/IRU or GPS required.
NOTE: Turbojet departures at/above 10000, maintain 280K until advised by ATC.



DEPARTURE ROUTE DESCRIPTION

TAKEOFF RUNWAY 6: Climb on heading 060° or as assigned for RADAR vectors to cross KZLOV between 4000 and 15000, thence....
TAKEOFF RUNWAY 24: Climb on heading 240° or as assigned for RADAR vectors to cross KZLOV between 4000 and 15000, thence....
...on track 111° to LIDDS, then on (transition). Maintain ATC assigned altitude, expect filed altitude 10 minutes after departure.

GRIVY TRANSITION (LIDDS2.GRIVY):

NOTE: Chart not to scale.