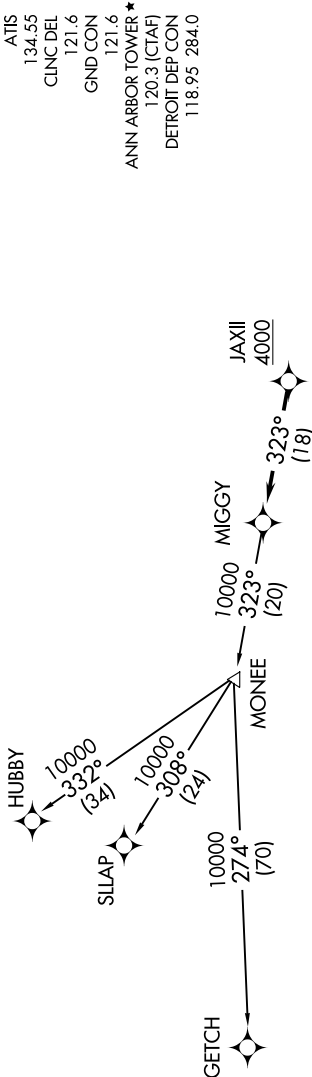


EC-1, 10 SEP 2020 to 08 OCT 2020



**TOP ALTITUDE:
ASSIGNED BY ATC**

- NOTE: RNAV 1.
- NOTE: RADAR required.
- NOTE: DME/DME/IRU or GPS required.
- NOTE: Turbojet departures at/above 10000, maintain 280K until advised by ATC.
- NOTE: GETCH TRANSITION: For use by KMKE area arrivals only, or as assigned by ATC.

DEPARTURE ROUTE DESCRIPTION

TAKEOFF RUNWAY 6: Climb on heading 060° or as assigned for RADAR vectors to cross JAXII at or above 4000, thence....

TAKEOFF RUNWAY 24: Climb on heading 240° or as assigned for RADAR vectors to cross JAXII at or above 4000, thence....

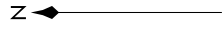
....on track 323° to MIGGY, then on (transition). Maintain ATC assigned altitude, expect filed altitude 10 minutes after departure.

GETCH TRANSITION (MIGGY2.GETCH):

HUBBY TRANSITION (MIGGY2.HUBBY):

SLLAP TRANSITION (MIGGY2.SLLAP):

TAKEOFF MINIMUMS:
 Rwys 6, 24: Standard.
 Rwys 12, 30: NA-Environmental.



NOTE: Chart not to scale.

EC-1, 10 SEP 2020 to 08 OCT 2020