

| | | | |
|--|------------------------|---|------------------------|
| VORTAC SVM 114.3 Chan 90 | APP CRS 213° | Rwy ldg TDZE 3505 831 | Apt Elev 839 |
|--|------------------------|---|------------------------|

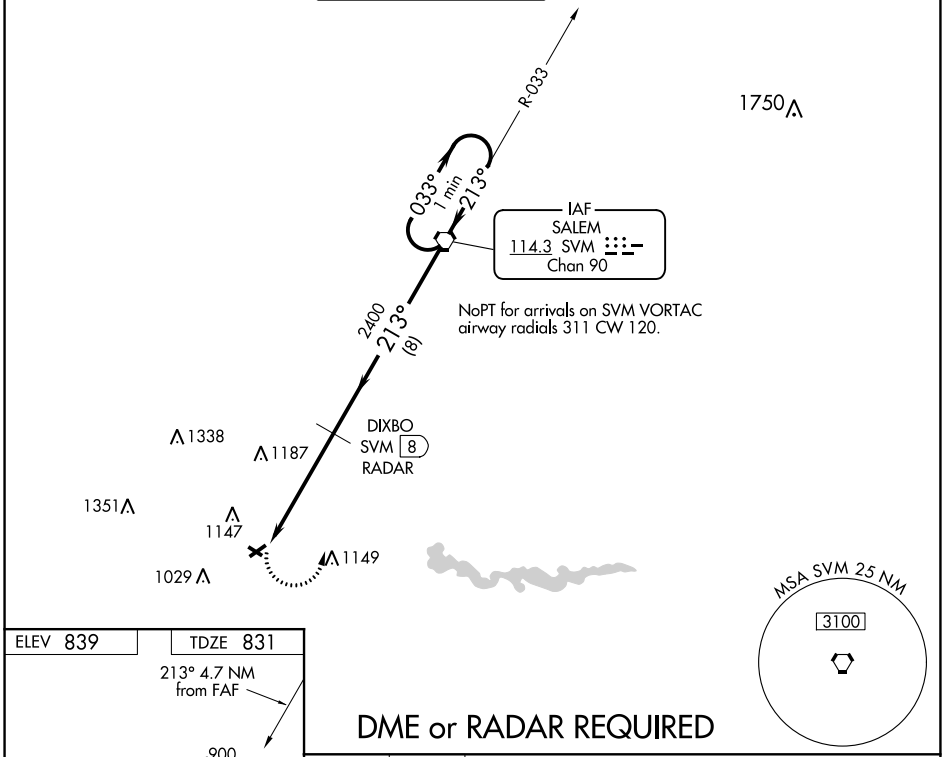
VOR RWY 24

ANN ARBOR MUNI (ARB)

⚠ Inop table does not apply. Rwy 24 helicopter visibility reduction below 3/4 SM NA.
 ⚠ When local altimeter setting not received, use Willow Run altimeter setting and increase all MDAs 40 feet and increase visibility S-24 Cat C/D visibility 1/8 SM and Circling Cat C/D visibility 1/4 SM. Circling NA to Rwys 12 and 30.

MISSED APPROACH: Climbing left turn to 3000 direct SVM VORTAC and hold.

| | | | | | |
|-----------------------|--|--|-------------------------|--------------------------|------------------------|
| ATIS 134.55 | DETROIT APP CON 118.95 284.0 | ANN ARBOR TOWER ★ 120.3 (CTAF) 0 | GND CON 121.6 | CLNC DEL 121.6 | UNICOM 123.0 |
|-----------------------|--|--|-------------------------|--------------------------|------------------------|



| | |
|----------------------|--------------------------|
| ELEV 839 | TDZE 831 |
| 213° 4.7 NM from FAF | |
| | |
| MIRL Rwy 6-24 0 | |
| REIL Rwy 6 0 | |
| FAF to MAP 4.7 NM | |
| Knots | 60 90 120 150 180 |
| Min:Sec | 4:42 3:08 2:21 1:53 1:34 |

DME or RADAR REQUIRED

3000 SVM VGSI and descent angles not coincident (VGSI Angle 3.00/TCH 20).

One Minute Holding Pattern

DIXBO SVM RADAR

SVM VORTAC

033° 2700

213° 2400

213°

3.02° TCH 55

4.7 NM 8 NM

| CATEGORY | A | B | C | D |
|----------|--------|-------------|--|--|
| S-24 | 1460-1 | 629 (700-1) | 1460-1 ³ / ₄ 629 (700-1 ³ / ₄) | 1460-1 ³ / ₄ 629 (700-1 ³ / ₄) |
| CIRCLING | 1500-1 | 661 (700-1) | 1500-1 ³ / ₄ 661 (700-1 ³ / ₄) | 1500-2 661 (700-2) |

EC-1, 10 SEP 2020 to 08 OCT 2020

EC-1, 10 SEP 2020 to 08 OCT 2020