

LOC/DME I-PGV 110.7 Chan 44	APP CRS 197°	Rwy Idg 6505 TDZE 25 Apt Elev 26
---	------------------------	---

ILS Y or LOC Y RWY 20

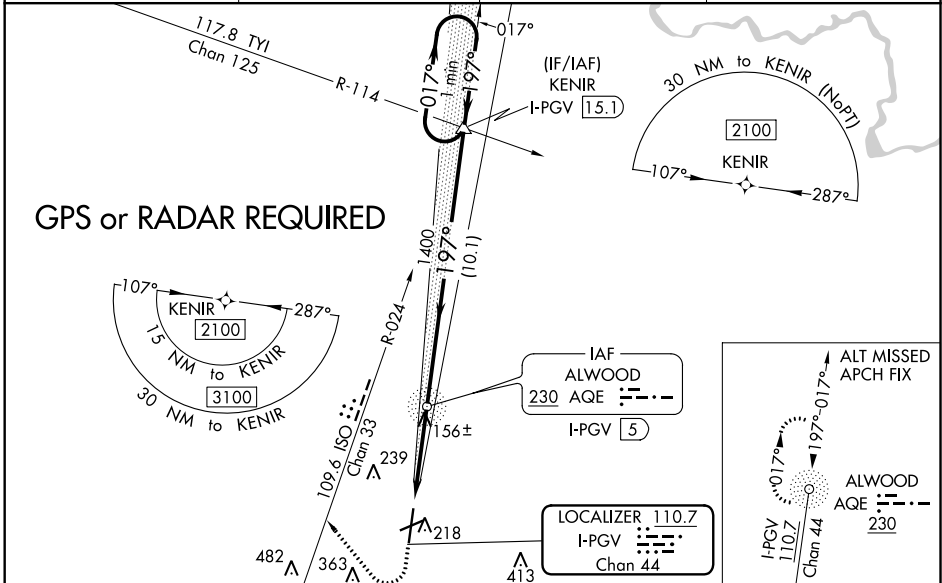
PITT-GREENVILLE (PGV)

⚠ Night landing: Rwy 8 NA. ADF required. VDP NA with Washington altimeter setting. When local altimeter setting not received, use Washington altimeter setting and increase all DA to 297 and increase all MDA 60 feet; increase S-LOC 20 Cat C/D visibility and Circling Cat C/D visibility 1/4 mile. For inop MALSR when using Washington altimeter setting, increase S-ILS 20 all Cats visibility to 3/8 mile.



MISSED APPROACH: Climb to 800 then climbing right turn to 2100 on heading 330° and an ISO VORTAC R-024 to KENIR INT/I-PGV 15.1 DME and hold.

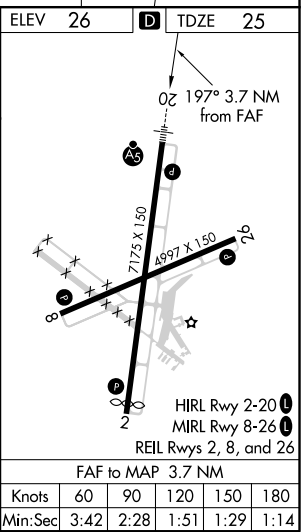
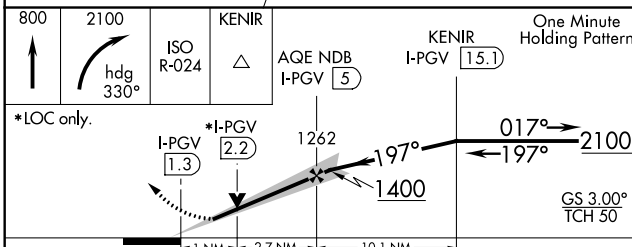
AWOS-3 128.425	WASHINGTON CENTER 123.85 279.65	CLNC DEL 122.35	UNICOM 122.8 (CTAF)
--------------------------	---	---------------------------	-------------------------------



SE-2, 10 SEP 2020 to 08 OCT 2020

SE-2, 10 SEP 2020 to 08 OCT 2020

ELEV 26	D TDZE 25
----------------	-------------------------



CATEGORY	A	B	C	D
S-ILS 20	256-1/2		231 (300-1/2)	
S-LOC 20	420-1/2	395 (400-1/2)	420-5/8	395 (400-5/8)
C CIRCLING	600-1 574 (600-1)	620-1 594 (600-1)	680-1 1/4 654 (700-1 1/4)	800-2 1/4 774 (800-2 1/4)

FAF to MAP 3.7 NM					
Knots	60	90	120	150	180
Min:Sec	3:42	2:28	1:51	1:29	1:14