

WAAS CH <b>42738</b> <b>W02A</b>	APP CRS <b>017°</b>	Rwy Idg <b>6904</b> TDZE <b>24</b> Apt Elev <b>26</b>
--	------------------------	---

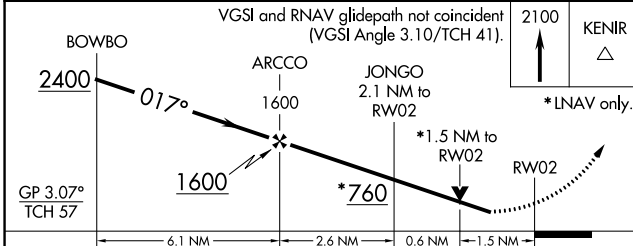
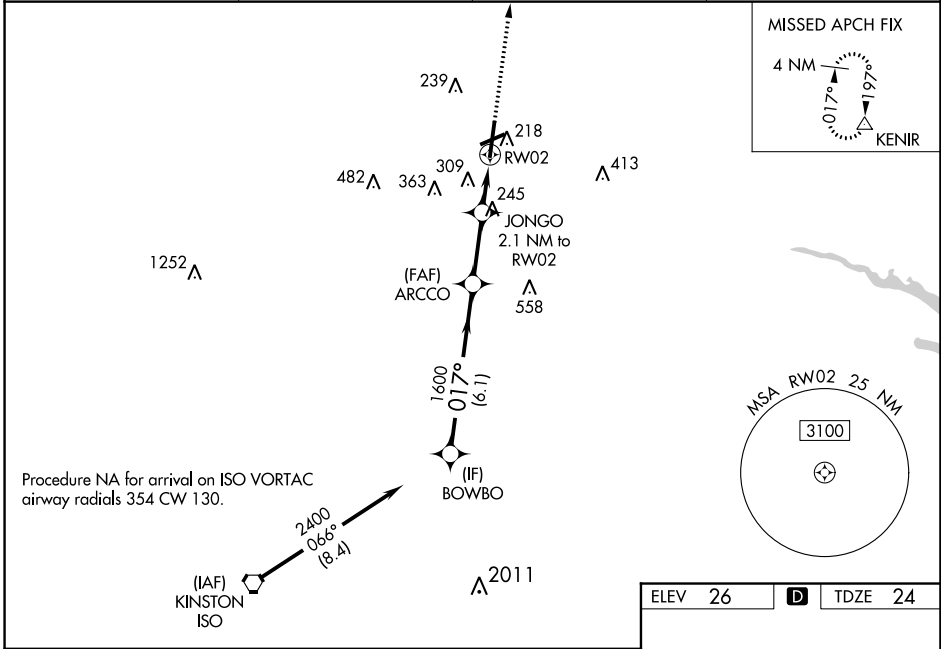
# RNAV (GPS) RWY 2

PITT-GREENVILLE (PGV)

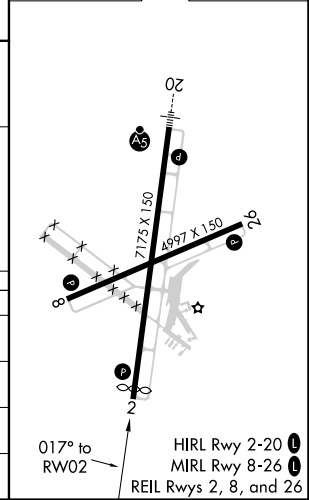
**⚠** Night landing: Rwy 8 NA. Baro-VNAV NA when using Washington altimeter setting. For uncompensated Baro-VNAV systems, LNAV/VNAV NA below -15°C (5°F) or above 50°C (122°F). DME/DME RNP-0.3 NA. Helicopter visibility reduction below ¾ SM NA. When local altimeter setting not received, use Washington altimeter setting; increase LPV DA to 444 feet and LNAV/VNAV DA to 661 feet and all MDA 60 feet; increase LPV all Cats visibility ½ mile and LNAV/VNAV all Cats visibility ½ mile and LNAV Cat C/D and Circling Cat C/D visibility ¼ mile. VDP NA when using Washington altimeter setting.

**MISSED APPROACH:**  
Climb to 2100 direct KENIR and hold.

AWOS-3 <b>128.425</b>	WASHINGTON CENTER <b>123.85 279.65</b>	CLNC DEL <b>122.35</b>	UNICOM <b>122.8 (CTAF) 0</b>
--------------------------	---	---------------------------	---------------------------------



ELEV 26	<b>D</b>	TDZE 24
---------	----------	---------



CATEGORY	A	B	C	D
LPV DA		403-1¼	379 (400-1¼)	
LNAV/VNAV DA		620-2	596 (600-2)	
LNAV MDA	540-1	516 (600-1)	540-1¾	516 (600-1¾)
<b>C</b> CIRCLING	600-1 574 (600-1)	620-1 594 (600-1)	680-1¾ 654 (700-1¾)	800-2½ 774 (800-2½)

SE-2, 10 SEP 2020 to 08 OCT 2020

SE-2, 10 SEP 2020 to 08 OCT 2020