

WAAS CH <b>53711</b> <b>W26A</b>	APP CRS <b>256°</b>	Rwy Idg TDZE Apt Elev	<b>4997</b> <b>24</b> <b>26</b>
--	------------------------	-----------------------------	---------------------------------------

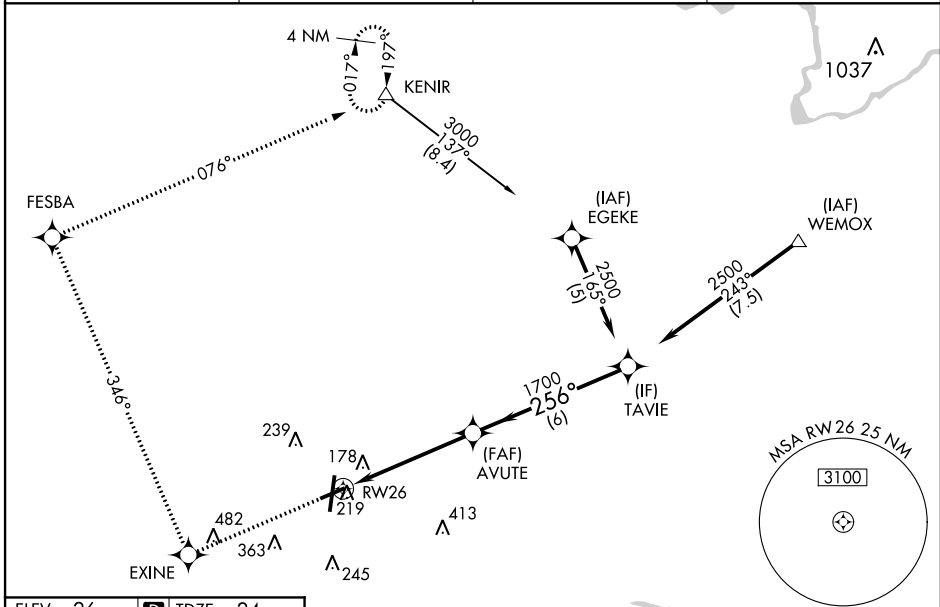
# RNAV (GPS) RWY 26

PITT-GREENVILLE (PGV)

**⚠** Baro-VNAV NA when using Washington altimeter setting. For uncompensated Baro-VNAV systems, LNAV/VNAV NA below -1.5°C (5°F) or above 48°C (118°F).  
**⚠** DME/DME RNP-0.3 NA. Visibility reduction by helicopters NA. When local altimeter setting not received use Washington altimeter setting and increase all DA 41 feet and all MDA 60 feet, increase LPV and LNAV/VNAV all Cats, LNAV Cat C and D, and Circling Cat C visibilities ¼ mile.

**MISSED APPROACH:** Climb to 3000 direct EXINE and via 346° track to FESBA and via 076° track to KENIR and hold.

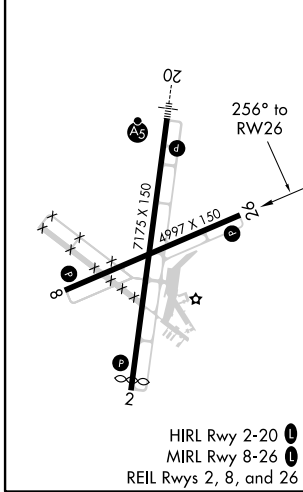
AWOS-3 <b>128.425</b>	WASHINGTON CENTER <b>123.85 279.65</b>	CLNC DEL <b>122.35</b>	UNICOM <b>122.8 (CTAF) 0</b>
--------------------------	---	---------------------------	---------------------------------



SE-2, 10 SEP 2020 to 08 OCT 2020

SE-2, 10 SEP 2020 to 08 OCT 2020

ELEV 26	<b>D</b>	TDZE 24
---------	----------	---------



<p>3000 EXINE tr 346° FESBA tr 076° KENIR</p> <p>Procedure Turn NA</p>				
<p>AVUTE TAVIE 2500</p> <p>GP 3.00° TCH 45</p>				
<p>5.1 NM 6 NM</p>				
CATEGORY	A	B	C	D
LPV DA	335-1 311 (400-1)			
LNAV/VNAV DA	464-1½ 440 (500-1½)			
LNAV MDA	520-1 496 (500-1)	520-1¼ 496 (500-1¼)	520-1½ 496 (500-1½)	520-1½ 496 (500-1½)
CIRCLING	620-1 594 (600-1)	620-1½ 594 (600-1½)	620-2 594 (600-2)	620-2 594 (600-2)