

| | | |
|---|------------------------|---|
| VOR/DME CTF 108.2 Chan 19 | APP CRS 080° | Rwy Idg 5000 TDZE 239 Apt Elev 239 |
|---|------------------------|---|

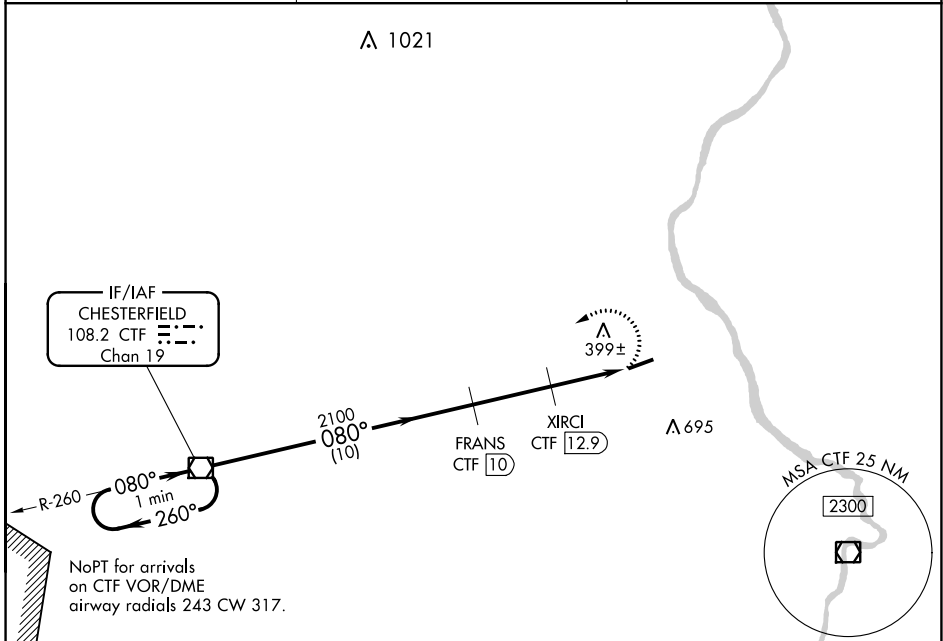
VOR/DME RWY 8

CHERAW MUNI/LYNCH BELLINGER FIELD (CQW)

⚠ When local altimeter setting not received, use Darlington altimeter setting and increase all MDA 60 feet, and S-8 Cat C/D visibility 1/8 mile and Circling Cat C/D visibility 1/4 mile. Procedure NA at night. Helicopter visibility reduction below 1 SM NA.

MISSED APPROACH: Climbing left turn to 2100 direct CTF VOR/DME and hold.

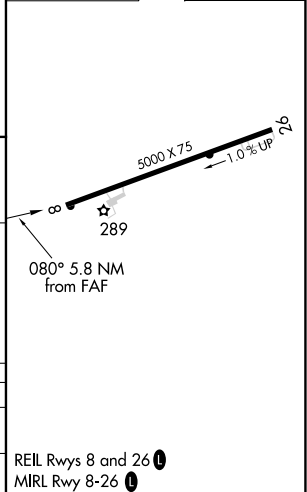
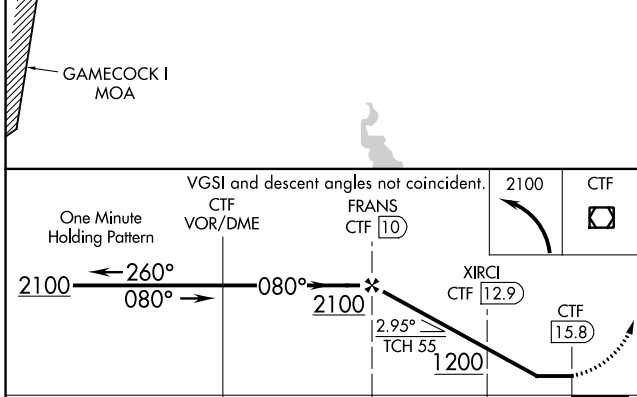
| | | |
|--------------------------|--|--|
| AWOS-3 124.825 | FLORENCE APP CON ★ 118.6 341.7 | UNICOM 122.8 (CTAF) 0 |
|--------------------------|--|--|



SE-2, 10 SEP 2020 to 08 OCT 2020

SE-2, 10 SEP 2020 to 08 OCT 2020

| | |
|----------|----------|
| ELEV 239 | TDZE 239 |
|----------|----------|



| CATEGORY | A | B | C | D |
|-------------------|-------|-------------|-------------------------|-------------------------|
| S-8 | 660-1 | 421 (500-1) | 660-1¼ | 421 (500-1¼) |
| C CIRCLING | 700-1 | 461 (500-1) | 1060-2½ 821 (900-2½) | 1060-2¾ 821 (900-2¾) |

REIL Rwy 8 and 26 **0**
MIRL Rwy 8-26 **0**

VOR/DME RWY 8