

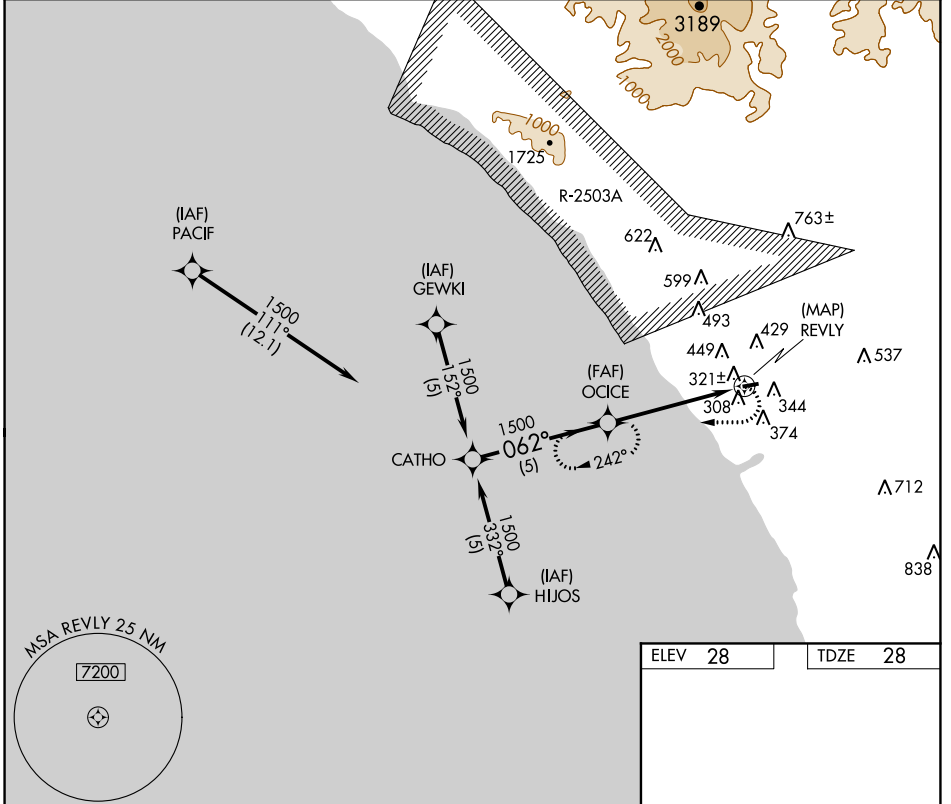
APP CRS <b>062°</b>	Rwy Idg <b>2712</b> TDZE <b>28</b> Apt Elev <b>28</b>
------------------------	---

# GPS RWY 6

BOB MAXWELL MEMORIAL AIRFIELD (OKB)

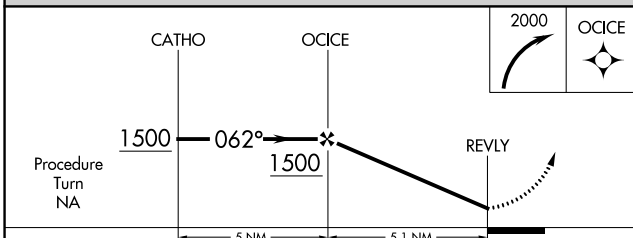
<b>▽</b> <b>▲</b> NA	Night Landing: Rwy 6 NA. Helicopter visibility reduction below 1 SM NA.	MISSED APPROACH: Climbing right turn to 2000 direct OCICE WP and hold.
-------------------------	--	--

ASOS <b>127.8</b>	SOCAL APP CON <b>127.3 323.0</b>	UNICOM <b>122.725 (CTAF) 0</b>
----------------------	-------------------------------------	-----------------------------------



SW-3, 10 SEP 2020 to 08 OCT 2020

SW-3, 10 SEP 2020 to 08 OCT 2020



ELEV 28	TDZE 28
---------	---------

Diagram showing the runway layout with MRL Rwy 6-24 and REL Rwy 24. Altitudes are 67±, 2712 X 75, 59±, 41±, and 24±. A heading of 062° to REVLY is shown.

CATEGORY	A	B	C	D
S-6	720-1	692 (700-1)	NA	
CIRCLING	880-1 852 (900-1)	880-1¼ 852 (900-1¼)	NA	

# GPS RWY 6