

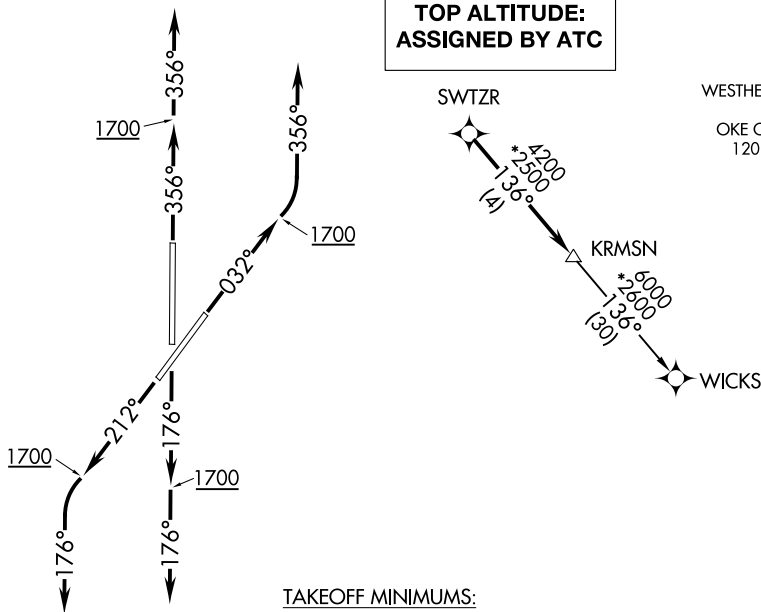
(KRMSN3.KRMSN) 17341

# KRMSN THREE DEPARTURE (RNAV)

UNIVERSITY OF OKLAHOMA WESTHEIMER (OUN)  
AL-5672 (FAA) NORMAN, OKLAHOMA

**TOP ALTITUDE:  
ASSIGNED BY ATC**

AWOS-3  
119.55  
GND CON  
121.6  
WESTHEIMER TOWER \*  
118.0  
OKE CITY DEP CON  
120.45 288.325



TAKEOFF MINIMUMS:

Rwys 3, 18, 21, 36:  
Standard with minimum climb of 500' per NM to 1700.

- NOTE: RADAR required.
- NOTE: DME/DME/IRU or GPS required.
- NOTE: RNAV 1.

NOTE: Chart not to scale.



## DEPARTURE ROUTE DESCRIPTOR

- TAKEOFF RWY 3: Climb on heading 032° to 1700, then left turn heading 356° or as assigned by ATC, expect RADAR vectors to SWTZR, thence . . . .
- TAKEOFF RWY 18: Climb on heading 176° to 1700, then heading 176° or as assigned by ATC, expect RADAR vectors to SWTZR, thence . . . .
- TAKEOFF RWY 21: Climb on heading 212° to 1700, then left turn heading 176° or as assigned by ATC, expect RADAR vectors to SWTZR, thence . . . .
- TAKEOFF RWY 36: Climb on heading 356° to 1700, then heading 356° or as assigned by ATC, expect RADAR vectors to SWTZR, thence . . . .

. . . . on track 136° to KRMSN, then on (transition). Maintain 3000 or as assigned by ATC. Expect filed altitude 10 minutes after departure.

WICKS TRANSITION (KRMSN3.WICKS)

# KRMSN THREE DEPARTURE (RNAV)

(KRMSN3.KRMSN) 07DEC17

NORMAN, OKLAHOMA  
UNIVERSITY OF OKLAHOMA WESTHEIMER (OUN)

SC-1, 10 SEP 2020 to 08 OCT 2020

SC-1, 10 SEP 2020 to 08 OCT 2020