

LOC/DME I-PHY 111.1 Chan 48	APP CRS 033°	Rwy Idg 4748 TDZE 1177 Apt Elev 1182
---	------------------------	---

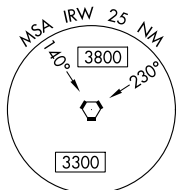
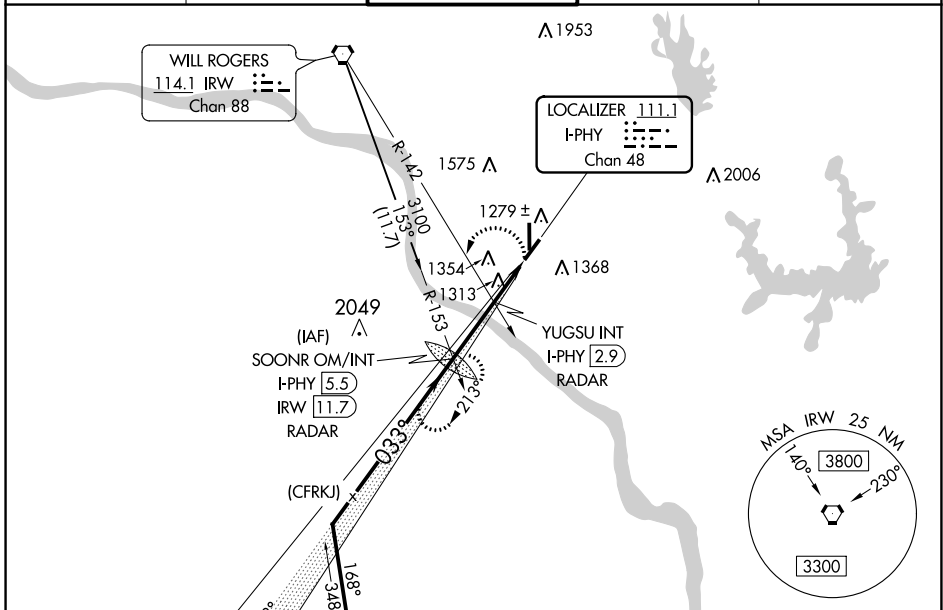
LOC RWY 3

UNIVERSITY OF OKLAHOMA WESTHEIMER (OUN)

⚠ When local altimeter setting not received, use Will Rogers World altimeter setting and increase all MDA 60 feet; increase S-3 Cat C/D visibility ¼ mile, Circling Cat C/D ¼ mile. For inop MALS increase S-3 Cat C/D visibility to 1½ mile. For inop MALS when using Will Rogers World altimeter setting, increase S-3 Cat C/D visibility to 1½ mile. Circling NA southeast of Rwy 3 and 21.

MALS MISSED APPROACH: Climbing left turn to 3100 on I-PHY SW course to SOONR OM/INT/I-PHY 5.5 DME/RADAR and hold, continue climb-in-hold to 3100.

AWOS-3 119.55	OKE CITY APP CON 120.45 288.325	WESTHEIMER TOWER* 118.0 (CTAF)	GND CON 121.6	UNICOM 122.95
-------------------------	---	--	-------------------------	-------------------------



ELEV 1182	TDZE 1177
MRL Rwy 3-21 and 18-36	
REIL Rwy 36	

Vertical profile diagram showing altitudes 81, 5199 x 100, 36, 1768 x 100, 21, 033° 4.5 NM from FAF.

FAF to MAP 4.5 NM					
Knots	60	90	120	150	180
Min:Sec	4:30	3:00	2:15	1:48	1:30

VGSIs and descent angles not coincident (VGSi Angle 3.00/TCH 40).	SOONR OM/INT I-PHY 5.5/RADAR		3100	I-PHY SW crs	SOONR
	3100	213°	033°	2700	1820
	3.09°	TCH 40	YUGSU INT I-PHY 2.9 RADAR	I-PHY 2.1	I-PHY 1
	2.6 NM	0.8 NM	1.1		
CATEGORY	A	B	C	D	
S-3	1580-¾	403 (400-¾)	1580-1	403 (400-1)	
C CIRCLING	1660-1	478 (500-1)	1940-2¼ 758 (800-2¼)	1940-2½ 758 (800-2½)	

SC-1, 10 SEP 2020 to 08 OCT 2020

SC-1, 10 SEP 2020 to 08 OCT 2020