

WAAS CH 82729 W36A	APP CRS 357°	Rwy Idg TDZE 1182 Apt Elev 1182	5199
----------------------------------------	------------------------	-----------------------------------------------------	-------------

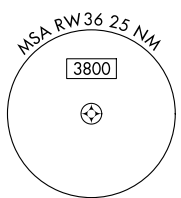
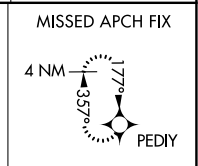
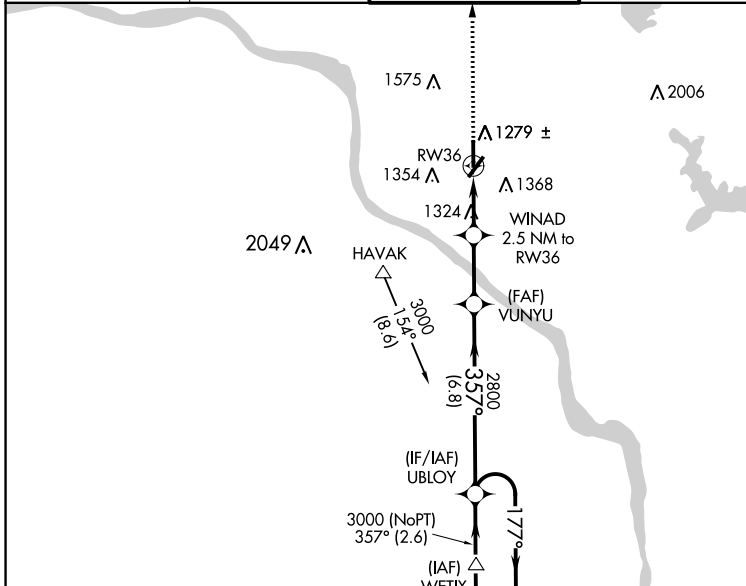
RNAV (GPS) RWY 36

UNIVERSITY OF OKLAHOMA WESTHEIMER (OUN)

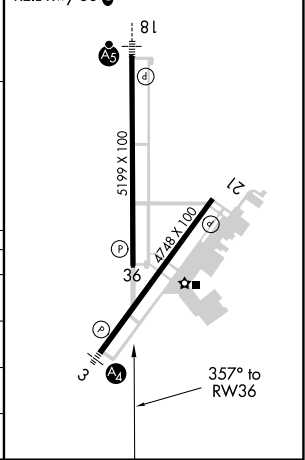
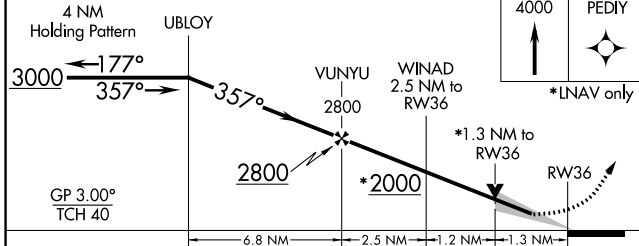
▼ For uncompensated Baro-VNAV systems, procedure NA below -17°C (2°F) or above 54°C (130°F).
▲ Baro-VNAV and VDP NA when using Will Rogers World altimeter setting. DME/DME RNP-0.3 NA.
 When local altimeter setting not received, use Will Rogers World altimeter setting and increase LPV DA to 1473 feet, LNAV/VNAV DA to 1541 feet; increase all MDA 60 feet, increase LPV visibility all Cats to 1 mile, LNAV/VNAV visibility all Cats to 1 1/4 mile, and increase Circling Cat C/D visibility 1/4 mile. Circling NA southeast of Rwy 3 and 21.

MISSED APPROACH:
 Climb to 4000 direct PEDIY and hold.

AWOS-3 119.55	OKE CITY APP CON 120.45 288.325	WESTHEIMER TOWER * 118.0 (CTAF) 0	GND CON 121.6	UNICOM 122.95
-------------------------	-------------------------------------------	---------------------------------------------	-------------------------	-------------------------



ELEV 1182	TDZE 1182
MIRL Rwy 3-21 and 18-36	REIL Rwy 36



CATEGORY	A	B	C	D
LPV DA		1432-7/8	250 (300-7/8)	
LNAV/VNAV DA		1500-1 1/8	318 (400-1 1/8)	
LNAV MDA	1640-1	458 (500-1)	1640-1 3/8	458 (500-1 3/8)
C CIRCLING	1660-1	478 (500-1)	1940-2 1/4 758 (800-2 1/4)	1940-2 1/2 758 (800-2 1/2)

SC-1, 10 SEP 2020 to 08 OCT 2020

SC-1, 10 SEP 2020 to 08 OCT 2020